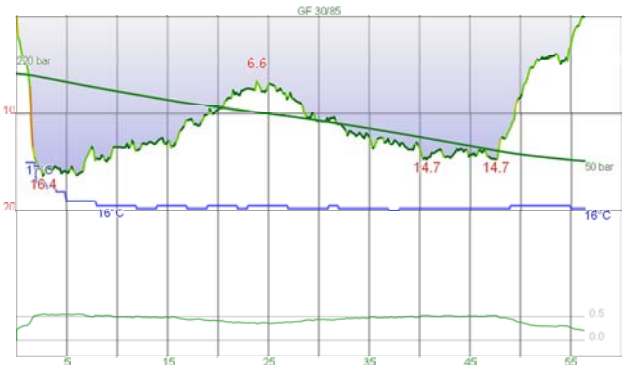


Dive #3320 - Sat, Sep 1, 2012 8:40
Australia NSW Sydney Shiprock
Max depth: 16.9 m
Duration: 56 min

Cylinder	Gasmix air	Gas Used 1442.7 l	SAC 11.7 l/min	Weight System Total Weight: 0.0 kg
			Max. CNS 8	
			OTU 2	

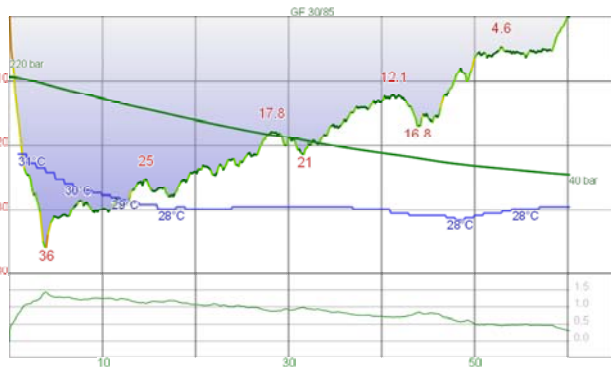
Divetype: Drift dive
Comment: Computer Settings: ZH-L16 OC 110% / 90%
Again had to cancel our deep dive due to winds and seas. 10 members dived here. Water cold, 14.6C, but an enjoyable dive. Again refound the black (striped) anglerfish. Quite a few moray eels, all in the normal spots. Six pineapplefish, two frogfish, a few octopus, a fiddler ray. Visibility fair.



Dive #3321 - Sun, Sep 2, 2012 9:14
Australia NSW Sydney Shiprock
Max depth: 16.4 m
Duration: 56 min

Cylinder	Gasmix air	Gas Used 1325.8 l	SAC 10.8 l/min	Weight System Total Weight: 0.0 kg
			Max. CNS 8	
			OTU 1	

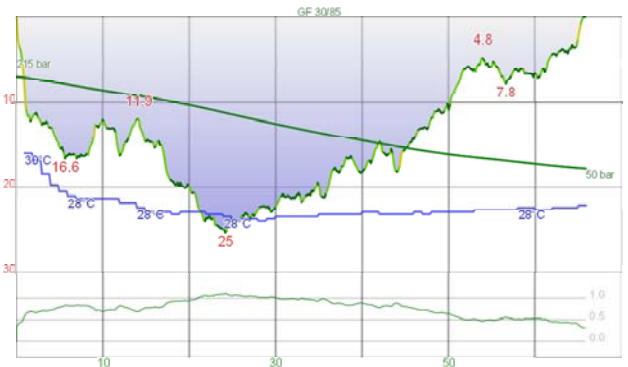
Divetype: Drift dive
Comment: Computer Settings: ZH-L16 OC 110% / 90%
Club dive. Did same dive as yesterday. Water just as cold. Black anglerfish had moved about 10 metres closer to the wall. Found another pineapplefish under The Bubble Cave. Two frogfish, most morays we saw yesterday. Also a big old one near the exit with with head and looks like it might be blind. Another nice dive. Visibility fair.



Dive #3322 - Sun, Sep 9, 2012 10:58
Indonesia Angel Reef
Max depth: 36 m
Duration: 60 min

Cylinder	Gasmix EAN31	Gas Used 1883.5 l	SAC 10.7 l/min	Weight System Total Weight: 0.0 kg
			Max. CNS 20	
			OTU 53	

Comment: Computer Settings: ZH-L16 GF OC 30% / 90%
First dive of the trip. A small sand cay located off island. Entered water on S side and went E with current. A vertical wall to over 50 m. Lots of gorgonias, barrel sponges and sea whips. Lots of smaller fish. After 20 mins turned to N and wall became a slope. More sandy and rubble here. Saw a small white ornate ghost pipefish, hairy squat lobsters in barrel sponges and a scrawled filefish. Great first dive. Visibility very excellent.



Dive #3323 - Sun, Sep 9, 2012 15:08
Indonesia Sumbawa Island Sumbawa Point
Max depth: 25 m
Duration: 66 min

Cylinder	Gasmix EAN31	Gas Used 1824.3 l	SAC 11.0 l/min	Weight System Total Weight: 0.0 kg
			Max. CNS 21	
			OTU 43	

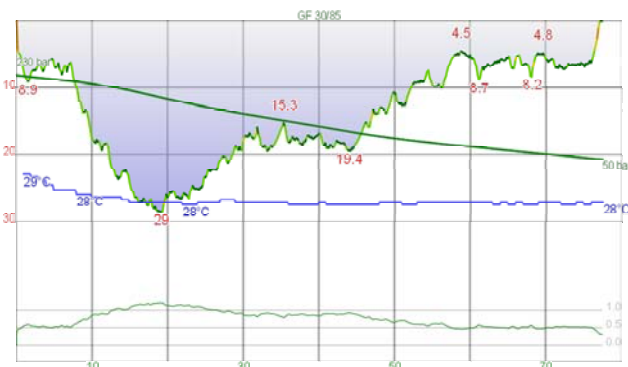
Comment: Computer Settings: ZH-L16 GF OC 30% / 90%
Located SE of point, sloping sand with some coral bommies and then sand and then sloping wall and sand. Saw 2 striped pipefish, 2 pygmy sea horses, 2 ribbon eels, 2 octopus and small gorgonias and barrel sponges. Very colourful dive site. Visibility excellent.



Dive #3324 - Sun, Sep 9, 2012 18:57
Indonesia Satonga Reef
Max depth: 18.5 m
Duration: 61 min

Cylinder	Gasmix EAN31	Gas Used 1326.8 l	SAC 10.8 l/min	Weight System Total Weight: 0.0 kg
			Max. CNS 17	
			OTU 18	

Comment: Computer Settings: ZH-L16 GF OC 30% / 90%
Night dive. Dive from off the E end of the beach where there was some reef. Followed the black sand to the W and back. Repeated this many times. Many firefish, hunting if you put a torch on a fish for too long. Rox found a juvenile clown anglerfish, about 10 mm long. Brilliant. Three stargazers in sand, much smaller than Sydney ones. Heaps of different jellyfish, shrimps, gurnards, spotted-eels, razorfish and flat worm. A stunning night dive. Visibility excellent.



Dive #3325 - Mon, Sep 10, 2012 7:29
Indonesia Sangiong Island Hot Rocks
Max depth: 29 m
Duration: 78 min

Cylinder	Gasmix EAN31	Gas Used 1990.1 l	SAC 10.2 l/min	Weight System Total Weight: 0.0 kg
			Max. CNS 19	
			OTU 46	

Comment: Computer Settings: ZH-L16 GF OC 30% / 90%
Located off Sangiong Island which is a volcano. There is hot water and air coming up through the black sand. Start in shallow water and drop deeper to a nice reef. After about 20 minutes there was a huge explosion, dynamite fishing. Was very loud and violently shook us. Scary. Large gorgonias and sea whips on wall, gobies on whips, spindle cowries, shrimp, 2 leaf scorpionfish and lots of nudibranchs. Visibility excellent.

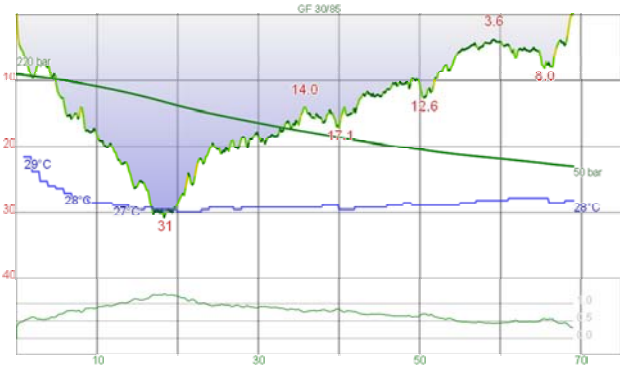


Dive #3326 - Mon, Sep 10, 2012 11:08
Indonesia Sangiong Island Sangiong

Lighthouse Reef

Cylinder	Gasmix EAN31	Gas Used 2100.7 l	SAC 11.2 l/min	Weight System
			Max. CNS 26	Total Weight: 0.0 kg
			OTU 47	

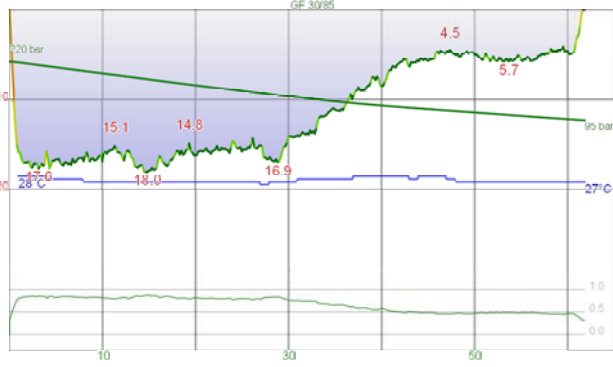
Comment: Computer Settings: ZH-L16 GF OC 30% / 90%
NW of lighthouse, dropped onto black sand then worked down to 25 m. Some bits of coral on sand. Two ornate ghost pipefish, indian walking fish, many nudibranchs. Crossed sand to S side, two more ghost pipefish, dancing shrimp, 3 pygmy sea horses. Worked our way back up to shallows. Visibility excellent.



Dive #3327 - Mon, Sep 10, 2012 15:03
Indonesia Sangiong Island Tikno Reef

Cylinder	Gasmix EAN31	Gas Used 1879.6 l	SAC 10.9 l/min	Weight System
			Max. CNS 25	Total Weight: 0.0 kg
			OTU 43	

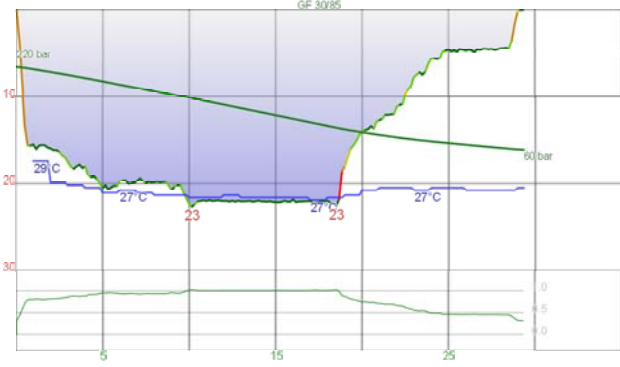
Comment: Computer Settings: ZH-L16 GF OC 30% / 90%
N side of island along beach. Again, sloping black sand to 30 m then a shear drop. Some bommies here. Small gorgonias and barrel sponges. Lots of black coral trees. Four leaf fish shallow. Many urangatang crabs, gobies on whips, nudibranchs and hawkfish. Reef shallow and along side of slope. Visibility excellent.



Dive #3328 - Mon, Sep 10, 2012 18:33
Indonesia Sangiong Island Bonto Reef

Cylinder	Gasmix EAN31	Gas Used 1382.0 l	SAC 10.0 l/min	Weight System
			Max. CNS 21	Total Weight: 0.0 kg
			OTU 28	

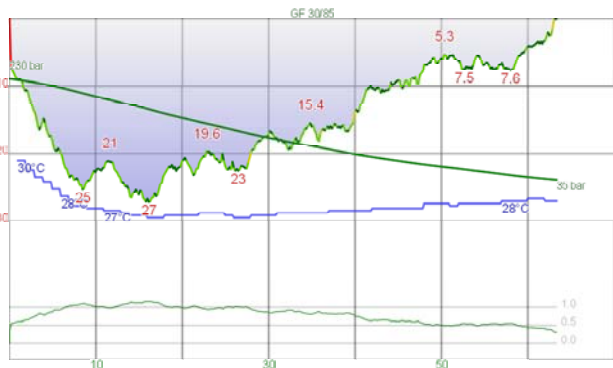
Comment: Computer Settings: ZH-L16 GF OC 30% / 90%
Night dive. Black sand sloping bottom and 5 m on top. Went N to S at 16 m. Saw a tiny white/red/orange anglerfish (10 mm) and ornate ghost pipefish, 2 pygmy pipehorses (or similar), 2 bob-tailed cuttlefish (5 mm), red shrimp, firefish. Turned at ridge and went to 5 m and then N. Went under a large boat being repaired and this was where the angler was. Spiders, decorator crabs with anemones. Excellent dive. Visibility excellent.



Dive #3329 - Tue, Sep 11, 2012 7:21
Indonesia Gili Lawalaut Takat Toko (Castle Rock)

Cylinder	Gasmix EAN31	Gas Used 1769.0 l	SAC 22.7 l/min	Weight System
			Max. CNS 8	Total Weight: 0.0 kg
			OTU 21	

Comment: Computer Settings: ZH-L16 GF OC 30% / 90%
A submerged sea mountain that comes up from 50+ m to 5 m. Lots of dive boats here. Dropped up current and descended to reef. Kelly could not get down due to ear problems and aborted dive. Waited for her and then moved forward to the viewing area. Very strong current, probably 1.25 to 1.5 kts and took 10 mins to get there. Used reef hook to stay in place. Hard work even doing this. Lots of sharks, white-tipped reef and grey reef. Heaps of GTs. Left at 100 bar (17 mins) and drift...



Dive #3330 - Tue, Sep 11, 2012 10:28
Indonesia Gili Lawa Laut Crystal Rock

Cylinder	Gasmix EAN31	Gas Used 2156.0 l	SAC 12.9 l/min	Weight System
			Max. CNS 20	Total Weight: 0.0 kg
			OTU 43	

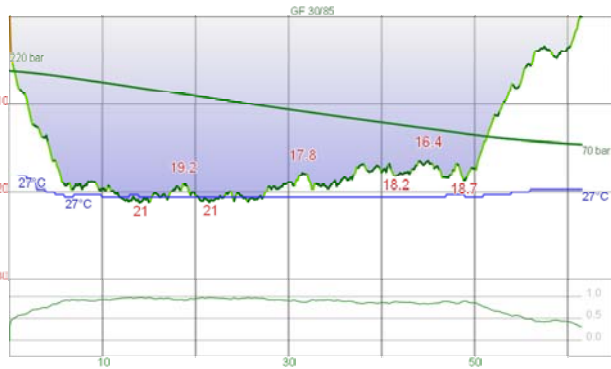
Comment: Computer Settings: ZH-L16 GF OC 30% / 90%
Located closer to Gili Lawa Laut than Castle Rock. This one has three pinnacles, one of which breaks surface. Dropped in E side and drifted to W along N side. Kelly, John and I went around the W pinnacle and back to the gap. Went to S side of E pinnacle but current too strong to go further. Spent rest of time in between the 2 main pinnacles. Saw 2 clown triggerfish, on e firefish, lots of clownfish (1 nemo). Very nice and easy dive. Visibility excellent.



Dive #3331 - Tue, Sep 11, 2012 13:51
Indonesia North Linta Strait Tawata Besar

Cylinder	Gasmix EAN31	Gas Used 1658.4 l	SAC 11.6 l/min	Weight System
			Max. CNS 20	Total Weight: 0.0 kg
			OTU 32	

Comment: Computer Settings: ZH-L16 GF OC 30% / 90%
Small island north end of Linta Strait. Dropped off S end of beach and drifted S about 0.5 kt to SE corner. Nice and easy. A turtle as we descended. Lots of small barrel sponges, small gorgonias, sea whips and soft corals. Saw 6 titan triggerfish, a few huge red bass, 4 turtles, mantis shrimp and more. A great dive. Visibility excellent.



Dive #3332 - Tue, Sep 11, 2012 18:57
Indonesia Wainilu Beach
Max depth: 21 m
Duration: 62 min

Cylinder	Gasmix EAN31	Gas Used 1658.4 l	SAC 9.9 l/min	Weight System
			Max. CNS 20	Total Weight: 0.0 kg
			OTU 48	

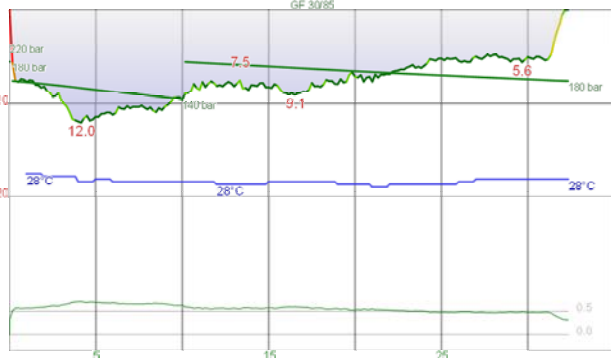
Comment: Computer Settings: ZH-L16 GF OC 30% / 90%
Night dive. Sloping black sand from beach with algae in 5 m. Some rocks/coral on the sand. Quite a steep slope. Went to 20 m and followed this level E. Found cuttlefish, bob-tailed cuttlefish (tiny), dozens of different nudibranchs, 3 zebra crabs on fire urchins, gurnard, small firefish with orange/black wings, shrimps, Spanish dancer, 3 striped pipefish. A brilliant night dive. Visibility excellent.



Dive #3333 - Wed, Sep 12, 2012 7:08
Indonesia Komodo Island Manta Alley
Max depth: 26 m
Duration: 71 min

Cylinder	Gasmix EAN32	Gas Used 1934.8 l	SAC 12.6 l/min	Weight System
			Max. CNS 15	Total Weight: 0.0 kg
			OTU 33	

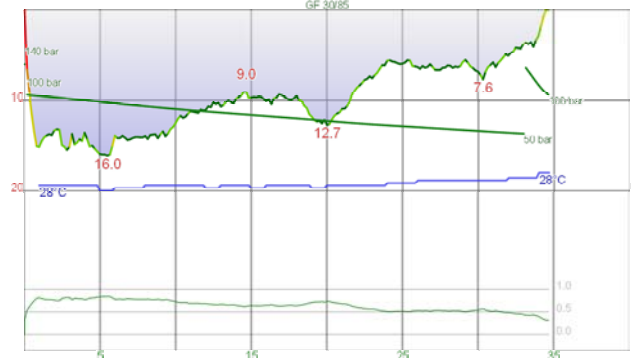
Comment: Computer Settings: ZH-L16 GF OC 30% / 90%
Located S end of Komodo Island. A very spectacular location above water, sheer cliffs and isolated rocks/islands. Dive site is between the isolated rock islands. Entered on SE side and dropped to 20 m and followed this to W. Bottom is sloping rock to 20 m then 25 m then 40+ m. Went to alley and thru to N side and then E to shallows (10 m). Back to alley and up. No mantas seen at all. One hump-headed wrasse and lots of small yellow sea cucumbers. Looked like Fish Rock underwater. Vis...



Dive #3334 - Wed, Sep 12, 2012 11:41
Indonesia Komodo Island Takat Makassar
Max depth: 12.0 m
Duration: 32 min

Cylinder	Gasmix EAN31 EAN32	Gas Used 442.31 40 bar	SAC 6.6 l/min	Weight System
			Max. CNS 8	Total Weight: 0.0 kg
			OTU 6	

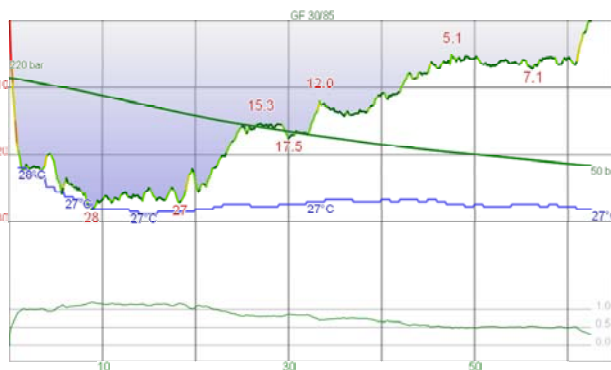
Dive type: Drift dive
Comment: Computer Settings: ZH-L16 GF OC 30% / 90%
Alternate manta site in Linta Strait. Dropped in E of a sand cay on ssand sloping to 15-18 m. Went along to the S in current that varied from over 2 kts to under 0.5 kt. Saw a reef manta that came from the shallows. Got good photos and video. We lost dive guide just before this so after a safety stop, we exited the water early and got the boat driver to take us back to do...



Dive #3335 - Wed, Sep 12, 2012 12:23
Indonesia Komodo Island Takat Makassar
Max depth: 16.0 m
Duration: 35 min

Cylinder	Gasmix EAN31 EAN32	Gas Used 442.31 50 bar	SAC 6.5 l/min	Weight System
			Max. CNS 14	Total Weight: 0.0 kg
			OTU 13	

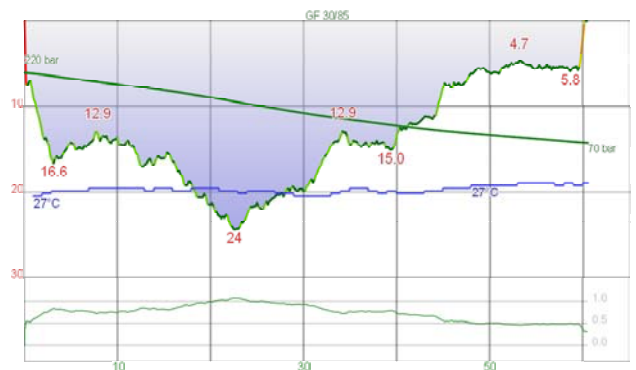
Dive type: Drift dive
Comment: Computer Settings: ZH-L16 GF OC 30% / 90%
Got out and went back towards start and did again. Dropped in behind another group and this time went a bit deeper. Saw another manta ray and Kelly got more very good video of it as it went right over her head. Visibility excellent.



Dive #3336 - Wed, Sep 12, 2012 15:10
Indonesia Batu Bolong
Max depth: 28 m
Duration: 63 min

Cylinder	Gasmix EAN31	Gas Used 1879.6 l	SAC 11.5 l/min	Weight System
			Max. CNS 22	Total Weight: 0.0 kg
			OTU 43	

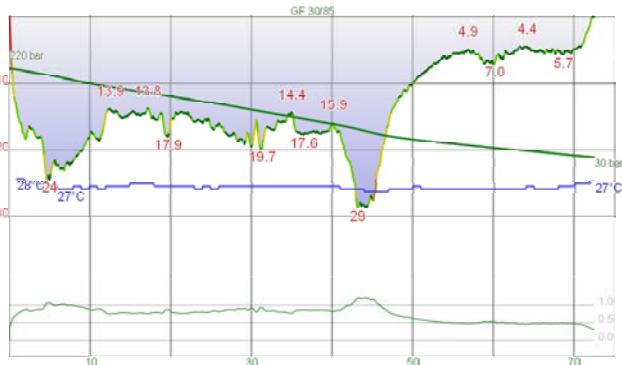
Comment: Computer Settings: ZH-L16 GF OC 30% / 90%
Smallest rock that comes up from 40+ m on steep slope. Dropped on S side. Some small gorgonias and barrel sponges. Very colourful. Saw 4 turtles, one eating. 1 white-tipped reef shark, some huge wrasse, firefish, 2 huge moray eels, 1 the biggest I have ever seen. Lots of fish feeding on sergeant major eggs. Strong currents around the island meant we stayed on the S side. At the end drifted a few hundred metres waiting to be collected. Visibility excellent.



Dive #3337 - Wed, Sep 12, 2012 18:29
Indonesia Komodo Island Golden Passage
Max depth: 24 m
Duration: 61 min

Cylinder	Gasmix EAN31	Gas Used 1658.4 l	SAC 11.2 l/min	Weight System
			Max. CNS 22	Total Weight: 0.0 kg
			OTU 35	

Comment: Computer Settings: ZH-L16 GF OC 30% / 90%
Gap between Gill Lawa Darat and Komodo. Went W along reef and then when reef turned S, kept going W over sand. A few firefish, a shrimp on a sea cucumber, some nudibranchs, not a huge amount of stuff. Lost Kelly on the sand and never found her again. Went back to the boat and waited there. I thought I hit my knee when getting back in boat but perhaps I was stung by something as the next day my knee swelled up and hurt. Visibility excellent.

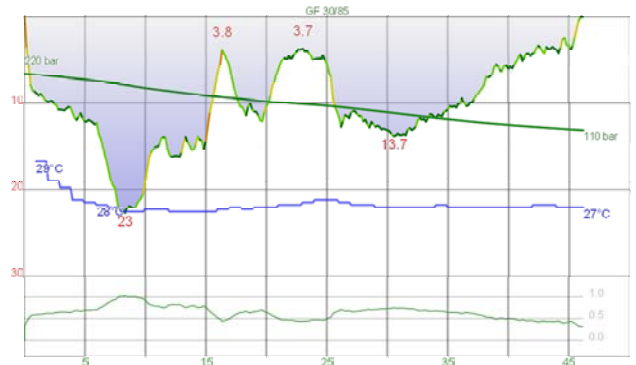


Dive #3338 - Thu, Sep 13, 2012 7:37
Indonesia Gili Lawa Laut Lighthouse

Max depth: 29 m
Duration: 73 min

Cylinder	Gasmix	Gas Used	SAC	Weight System
EAN31		1988.2 l	11.2 l/min	Total Weight: 0.0 kg
			Max. CNS	17
			OTU	43

Divetype: Drift dive
Comment: Computer Settings: ZH-L16 GF OC 30% / 90%
oated N point of Gili Lawa Laut. Current running S to N. Dropped in a few 100 m S of lighthouse. Reef top 5 m, sloping sand to 30-40 m. Went to about 20 m. Huge gorgonias down deeper, smaller ones on the slope. Lots of sea whips and barrel sponges. Saw 2 lots of nemos, lots of other fish. Small coral bits with sand in between. Closer to point less coral, more hydr...

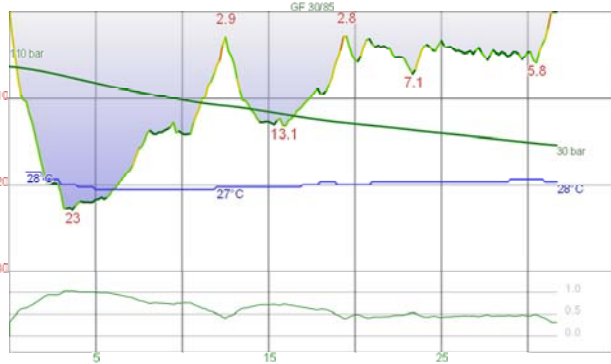


Dive #3339 - Thu, Sep 13, 2012 11:36
Indonesia Gili Lawa Laut Shotgun

Max depth: 23 m
Duration: 46 min

Cylinder	Gasmix	Gas Used	SAC	Weight System
EAN31		1216.2 l	12.3 l/min	Total Weight: 0.0 kg
			Max. CNS	13
			OTU	17

Divetype: Drift dive
Comment: Computer Settings: ZH-L16 GF OC 30% / 90%
This is a drift dive from W side of channel between Gili Lawa Laut and Gili Lawa Darat. Easy drift to the Fish Bowl which is a large amphitheatre with sandy bottom, steep wall on S side and a canyon on SE side. Lots of white tip reef sharks, garden eels and more. You exit via the gully. Saw a clown triggerfish here. As you go up the gully (very beautiful) it gets shallower ...



Dive #3340 - Thu, Sep 13, 2012 12:29
Indonesia Gili Lawa Laut Shotgun

Max depth: 23 m
Duration: 32 min

Cylinder	Gasmix	Gas Used	SAC	Weight System
EAN31		837.1 l	13.3 l/min	Total Weight: 0.0 kg
			Max. CNS	18
			OTU	11

Divetype: Drift dive
Comment: Computer Settings: ZH-L16 GF OC 30% / 90%
Got out and went back and did it again it was that good. Visibility excellent.

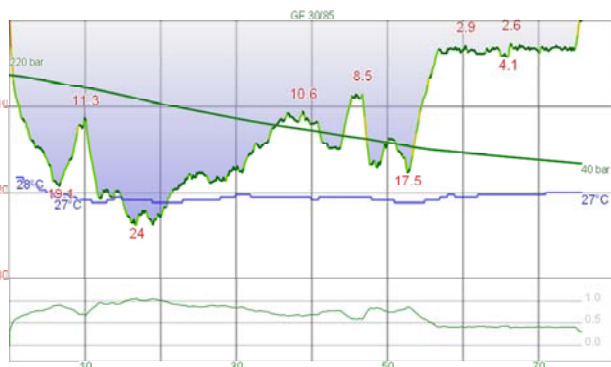


Dive #3341 - Thu, Sep 13, 2012 15:49
Indonesia Gili Banta Tankduk Rusa (Roller Coaster)

Max depth: 27 m
Duration: 57 min

Cylinder	Gasmix	Gas Used	SAC	Weight System
EAN31		2040.5 l	14.9 l/min	unknown Total Weight: 8.0 kg
			Max. CNS	18
			OTU	33

Comment: Computer Settings: ZH-L16 GF OC 30% / 90%
Interesting dive! Entered water S of a point which looks like an elephant. Drifted N in a very strong current that had updrafts and downdrafts. Went from 18 to 12 m and then from 12 m to 28 m! Once around the corner it became more predictable, although we had to swim into a very slight current. Had another dynamite explosion rock us, not as loud as the previous one. Saw 2 blue ribbon eels and then 1 black one. At the end we had a reef manta ray sweep in and head back W. Hard for first ...



Dive #3342 - Fri, Sep 14, 2012 7:06
Indonesia Sumbawa Island

Max depth: 24 m
Duration: 76 min

Cylinder	Gasmix	Gas Used	SAC	Weight System
EAN31		1883.5 l	10.7 l/min	Total Weight: 0.0 kg
			Max. CNS	17
			OTU	41

Comment: Computer Settings: ZH-L16 GF OC 30% / 90%
Off a beach and lighthouse. Shallows 3 m with sea grass and a slope to 30 m or so. We went to 18 m on the E end on the reef and then crossed the sand at 22 m. Zig-zagged back up. Saw 4 pipefish, robust ghost pipefish, 2 tiny anglerfish, one yellow and red and the other black with red and blue. 3 ornate ghost pipefish, dancing shrimp, yellow sea horses and more. A really brilliant dive. Visibility excellent.

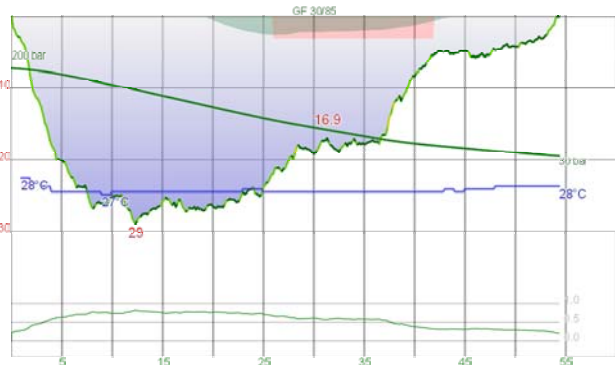


Dive #3343 - Fri, Sep 14, 2012 11:51
Indonesia Moyo Island Little Angel

Max depth: 30 m
Duration: 64 min

Cylinder	Gasmix	Gas Used	SAC	Weight System
EAN31 EAN32		0 bar 1674.2 l	11.2 l/min	Total Weight: 0.0 kg
			Max. CNS	20
			OTU	41

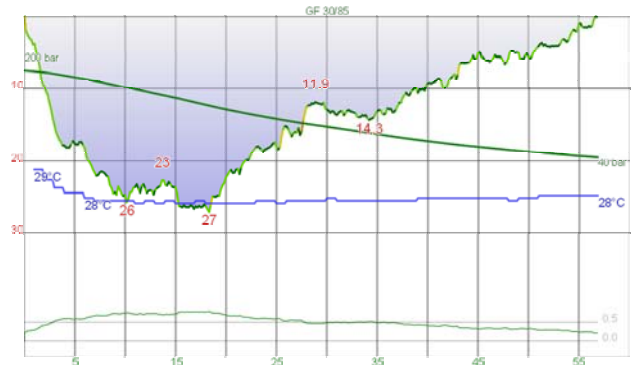
Divetype: Drift dive
Comment: Computer Settings: ZH-L16 GF OC 30% / 90%
Located very close (NE) to the first dive of the trip. A sandy pinnacle with coral on S side. Top in 3 m and S side slopes to 40 + m. Entered at E end and had to swim into a slight current for a couple of minutes before it took us. Mostly coral with one sand patch. Once at W end we turned around and came back E shallower and then turned again. Large gorgonias, sea whip...



Dive #3344 - Sun, Sep 16, 2012 6:57
Indonesia Bali Tumbalen USAT Liberty

Cylinder	Gas mix	Gas Used	SAC	Weight System
	air	1778.9 l	12.4 l/min	Total Weight: 0.0 kg
			Max. CNS	
			9	
			OTU	
			17	

Comment: Computer Settings: ZH-L16 GF OC 30% / 90%
Very early dive to beat the crowds. Went from stern to bow on sand and then back to stern. Very broken up. Some mats/kingposts on sand, prop shaft, anchor chain from bow, spare anchor inside wreck, a huge gun shell above bow. Did not look in detail at the wreck yet. Saw a pygmy sea horse, interesting shrimp, mantis shrimp, nudibranchs. Lots of humpheaded wrasse near stern as we entered. Very easy and interesting dive. Visibility excellent.



Dive #3345 - Sun, Sep 16, 2012 10:20
Indonesia Bali Tumbalen Dropoff (The Wall)

Cylinder	Gas mix	Gas Used	SAC	Weight System
	air	1674.2 l	12.4 l/min	Total Weight: 0.0 kg
			Max. CNS	
			12	
			OTU	
			11	

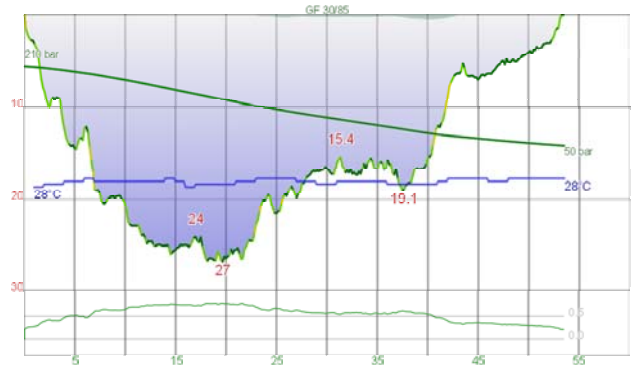
Divetype: Drift dive
Comment: Computer Settings: ZH-L16 GF OC 30% / 90%
Located about 200 m to west of wreck. Enter water and swim on rocks then black sand. Lost my wide angle lens here when I appear to have missed putting it in my pocket. Bigger! Went across sand at 16 to 20 m and then when we hit the reef followed this to the north. This quickly becomes a shear wall to 65 m. Went to about 28 m and at point turned around ...



Dive #3346 - Sun, Sep 16, 2012 15:13
Indonesia Bali Tumbalen Liberty Muck

Cylinder	Gas mix	Gas Used	SAC	Weight System
	air	1778.9 l	12.1 l/min	Total Weight: 0.0 kg
			Max. CNS	
			11	
			OTU	
			11	

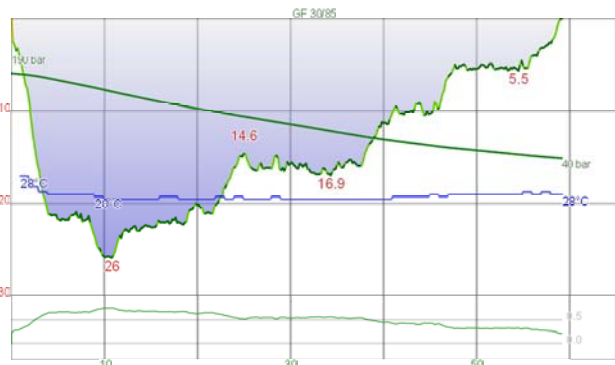
Comment: Computer Settings: ZH-L16 GF OC 30% / 90%
Entered the water at the wreck site but headed straight out. Gradually worked our way to about 24 m and then zig-zagged back shallower. Black sand with some small coral pieces. Lots to see. Saw mimic octopus (brilliant), ornate ghost pipefish, many different shrimp and nudibranch, a mantis shrimp, lots of different crabs, garden eels, clownfish and more. Another great dive. Visibility very good.



Dive #3347 - Mon, Sep 17, 2012 6:38
Indonesia Bali Tumbalen USAT Liberty

Cylinder	Gas mix	Gas Used	SAC	Weight System
	air	1674.2 l	12.0 l/min	Total Weight: 0.0 kg
			Max. CNS	
			8	
			OTU	
			14	

Comment: Computer Settings: ZH-L16 GF OC 30% / 90%
Another very early start, in the water well before 7 am. Did a similar dive to yesterday but did not go to the bow. Lots more divers in the water this morning. Kelly found a robust ghost pipefish, saw lots of mantis shrimp (one orange), any different crabs and nudibranch. Also saw the same pygmy sea horse as yesterday but got better photos I think. Visibility excellent.



Dive #3348 - Mon, Sep 17, 2012 10:07
Indonesia Bali Tumbalen Seraya Secrets

Cylinder	Gas mix	Gas Used	SAC	Weight System
	air	1569.6 l	10.9 l/min	Total Weight: 0.0 kg
			Max. CNS	
			11	
			OTU	
			12	

Comment: Computer Settings: ZH-L16 GF OC 30% / 90%
Located about 3 km E of Tumbalen. Small waves again but beach is smaller rocks so much easier. Went out and then down to left towards W. Got to 26 m. Found lots of stuff, including moray eel with cleaner shrimp on it and dozens more cleaners around. Also a tiny anglerfish, a few nudibranchs, crabs, other shrimp. There is also a steel dome artificial reef with coral on it in the shallower area. An excellent dive. Visibility very good.



Dive #3349 - Mon, Sep 17, 2012 12:07
Indonesia Bali Tumbalen Seraya Secrets

Cylinder	Gas mix	Gas Used	SAC	Weight System
	air	1370.8 l	11.9 l/min	Total Weight: 0.0 kg
			Max. CNS	
			14	
			OTU	
			7	

Comment: Computer Settings: ZH-L16 GF OC 30% / 90%
Entered at same spot as last dive but went right towards E. Went to 23 m. Found another artificial reef with many fish, a small bommie with two eels, one a spotted one. Both had cleaner shrimp on it. Another tiny anglerfish, many nudibranchs, crabs (including a tiny soft coral crab) and shrimp. One strange small octopus, maybe a blue ring. Visibility very good.



Dive #3350 - Tue, Sep 18, 2012 6:40
Indonesia Bali Tumbalen Harlequin

Max depth: 30 m
Duration: 56 min

Cylinder	Gas Used	SAC	Weight System
Gasmix air	1569.6 l	11.4 l/min	Total Weight: 0.0 kg
		Max. CNS 9	
		OTU 13	

Comment: Computer Settings: ZH-L16 GF OC 30% / 90%
Entered water to right of wreck and went down to 28 m. Here there are a couple of harlequin shrimp. One is large and the other tiny. It is on a sand ridge that runs down from the shore. Then worked our way shallower, going from one ridge to the next. A few different nudibranchs, a crab on a sea pen, octopus, cuttlefishs, the biggest mantis shrimp I have ever seen. Nice pre-breakfast dive. Visibility very good.

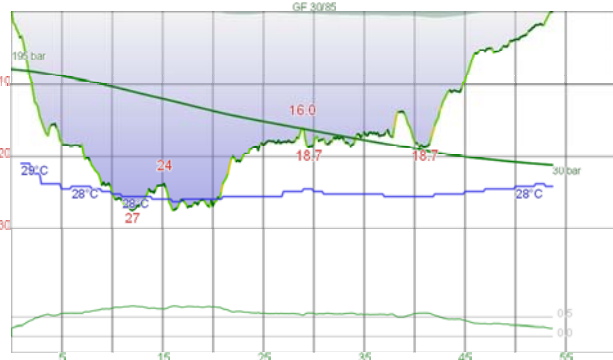


Dive #3351 - Tue, Sep 18, 2012 9:41
Indonesia Bali Tumbalen Coral Gardens

Max depth: 24 m
Duration: 56 min

Cylinder	Gas Used	SAC	Weight System
Gasmix air	1517.3 l	11.3 l/min	Total Weight: 0.0 kg
		Max. CNS 12	
		OTU 11	

Comment: Computer Settings: ZH-L16 GF OC 30% / 90%
Located down lane S of supermarket and the down a track. More black sand ridges and gullies. Went down one to 28 m and here found a cleaner shrimp station. Lots here and a moray eel. I got them to clean my mouth and had photo taken by Steve. Also took his. Then explored as we slowly ascended. Found more shrimp, cuttlefish, octopus, crabs, spindie cowie on sea whip, featherstar crab and more. In shallows there is a artificial reef made to look like a plane and also a collapsed one. ...



Dive #3352 - Tue, Sep 18, 2012 15:14
Indonesia Bali Tumbalen USAT Liberty

Max depth: 27 m
Duration: 54 min

Cylinder	Gas Used	SAC	Weight System
Gasmix air	1726.6 l	12.2 l/min	Total Weight: 0.0 kg
		Max. CNS 10	
		OTU 15	

Comment: Computer Settings: ZH-L16 GF OC 30% / 90%
Not as many divers around asin the middle of the day. Found a white and red/orange anglerfish (25 mm) on stern gun platform. Went to bow and then back through the wreckage. Guide found another pygmy sea horse. Went all the way back to the stern and then up through the gardens. Visibility very good.



Dive #3353 - Wed, Sep 19, 2012 6:33
Indonesia Bali Tumbalen USAT Liberty

Max depth: 32 m
Duration: 53 min

Cylinder	Gas Used	SAC	Weight System
Gasmix air	1569.6 l	11.3 l/min	Total Weight: 0.0 kg
		Max. CNS 9	
		OTU 16	

Comment: Computer Settings: ZH-L16 GF OC 30% / 90%
Another pre-7 am dived the wreck. Did similar to previous dives but explored abit more off the wreck. Saw the anglerfish that we saw yesterday as well as the pygmy sea horse. At the bow the anchor chain runs deeper below the bow north and loops back, presumably to the chain coming from the hawser. Back via the boilers. Can see start of the prop shaft, but no engine. Saw a largish shark swim over the bow. Visibility very good.



Dive #3354 - Wed, Sep 19, 2012 9:51
Indonesia Bali Tumbalen Kubu Reef

Max depth: 29 m
Duration: 54 min

Cylinder	Gas Used	SAC	Weight System
Gasmix air	1569.6 l	12.0 l/min	Total Weight: 0.0 kg
		Max. CNS 11	
		OTU 12	

Comment: Computer Settings: ZH-L16 GF OC 30% / 90%
Went to right side along the ridge. A larger yellow anglerfish here. Then the reef becomes more reef like, large corals. It becomes a sort of wall and turns to the south. Lots of gorgonias and barrel sponges. Many more nudis and shrimp, including a nudie like a fine-lined tambja with red rhinos. Visibility excellent.

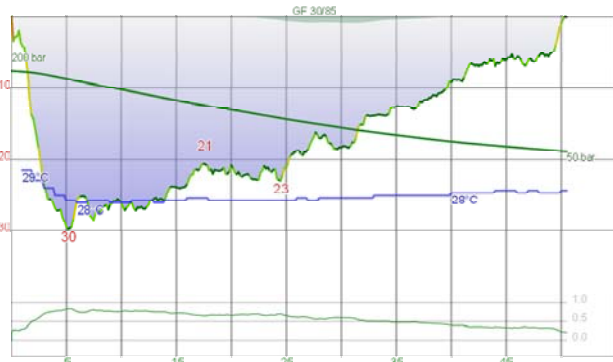


Dive #3355 - Wed, Sep 19, 2012 11:50
Indonesia Bali Tumbalen Kubu Reef

Max depth: 26 m
Duration: 54 min

Cylinder	Gas Used	SAC	Weight System
Gasmix air	1465.0 l	12.4 l/min	Total Weight: 0.0 kg
		Max. CNS 15	
		OTU 9	

Comment: Computer Settings: ZH-L16 GF OC 30% / 90%
Went left this dive. Across the gully at the start of the other ridge there is a mooring. At the bottom there was a tiny black anglerfish, then in the gorgonia above, a tiny white/red/yellow one and then in a basket star, two ornate ghost pipefish. Cam back along the reef top. Lots more to see as well. I refound Kelly's macro lens for her GoPro which she lost right at the start of the dive. Visibility excellent.

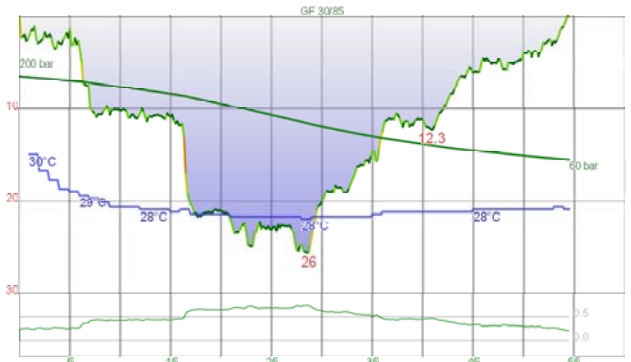


Dive #3356 - Thu, Sep 20, 2012 9:23
Indonesia Moyo Island Tumbalen

Max depth: 30 m
Duration: 51 min

Eflum Under		Gas Used	SAC	Weight System
Cylinder	Gasmix air	1569.6 l	11.6 l/min	Total Weight: 0.0 kg
			Max. CNS 9	
			OTU 15	

Diveactivity: Drift dive
DiveType: Boat
Comment: Computer Settings: ZH-L16 GF OC 30% / 90%
Boat dive. Located around the point from Drop Off. Dropped in the shallows and then drifted towards the N. I had a bit of ear problem at start but then okay. Sloping reef at first with finger coral and lots of gorgonias, barrel sponges and some sea whips. Then a more sheer wall to perhaps 40+ m. Saw a barracuda, leaf fish, hump-headed wrasse, shrimp and many nudib...



Dive #3357 - Thu, Sep 20, 2012 11:22
Indonesia Bali Tumbalen Dropoff (The Wall)

Max depth: 26 m
Duration: 55 min

Weight System		Gas Used	SAC	Weight System
Cylinder	Gasmix air	1465.0 l	12.2 l/min	Total Weight: 0.0 kg
			Max. CNS 13	
			OTU 8	

Diveactivity: Drift dive
DiveType: Boat
Comment: Computer Settings: ZH-L16 GF OC 30% / 90%
Another boat dive, entered the water where were left it last dive. Drifted back almost to the beach. Had big problems this dive with my right ear. Took me 6 mins to get to 7 m, then 2 more to get to 11 m and then another 6 to get to 20 m. Saw ...

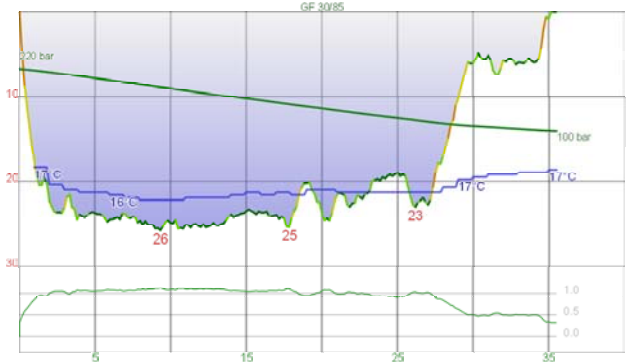


Dive #3358 - Fri, Sep 21, 2012 15:49
Indonesia Bali Tumbalen USAT Liberty

Max depth: 31 m
Duration: 57 min

Weight System		Gas Used	SAC	Weight System
Cylinder	Gasmix air	1881.0 l	12.1 l/min	Total Weight: 0.0 kg
			Max. CNS 10	
			OTU 18	

Comment: Computer Settings: ZH-L16 GF OC 30% / 90%
Last dive. Kelly and I both succeeded in getting down even though we had ear problems last 24 hours or so. Went to wreck and then to bow. Saw pygmy sea horse as normal. Back a bit deeper than normal. Anchor chain runs from under bow out deeper and then towards bow and in front. No anglerfish on way back. Finished off in the shallows. Visibility very good.

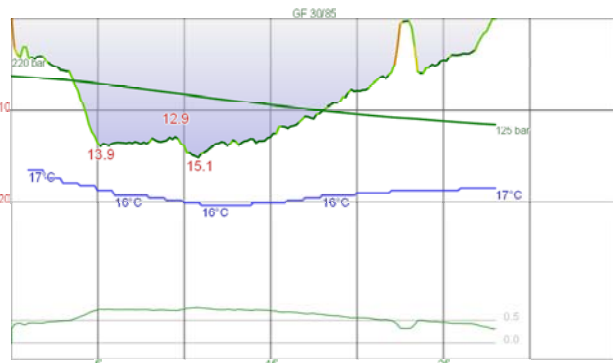


Dive #3359 - Wed, Sep 26, 2012 8:26
Australia NSW Sydney Barrens Hut/ The Split

Max depth: 26 m
Duration: 36 min

Weight System		Gas Used	SAC	Weight System
Cylinder	Gasmix EAN31	1326.8 l	12.2 l/min	unknown Total Weight: 8.0 kg
			Max. CNS 12	
			OTU 33	

Comment: Computer Settings: ZH-L16 GF OC 30% / 90%
Back to reality! Club boat dive. Used wetsuit as I could not be bothered reattaching extra hose for drysuit and adding more weight to pockets. Not too bad, even with 16 on bottom. Dirty and warmer on top, but okay on bottom. Did the usual route, lots of bastard trumpeters, red morwong and yellowtail. A nice and relaxing dive. Visibility fair.

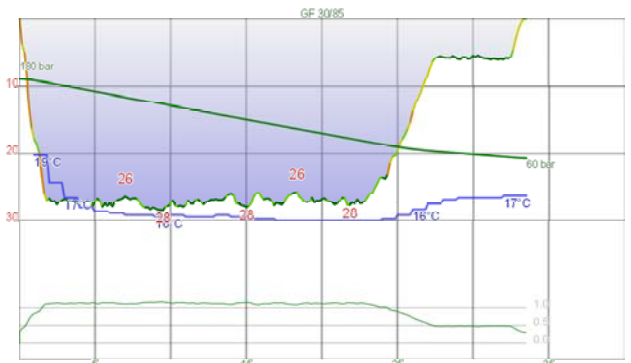


Dive #3360 - Thu, Sep 27, 2012 19:40
Australia North Linta Strait Sydney Bare Island Right

Max depth: 15.1 m
Duration: 28 min

Weight System		Gas Used	SAC	Weight System
Cylinder	Gasmix EAN31	806.5 l	14.4 l/min	Total Weight: 0.0 kg
			Max. CNS 5	
			OTU 9	

DiveType: Night dive
Comment: Computer Settings: ZH-L16 GF OC 30% / 90%
Club night dive. A bit of a disaster, one new member's tank kept falling out of his BCD so did not dive. The next one could not get down as he did not know how to dump air. Then used a 10 litre tank in 24 minutes. Another member using drysuit for first time was underweighted. Went in off W point with intention to go to Isolated Reefs but had to turn at corner when ...

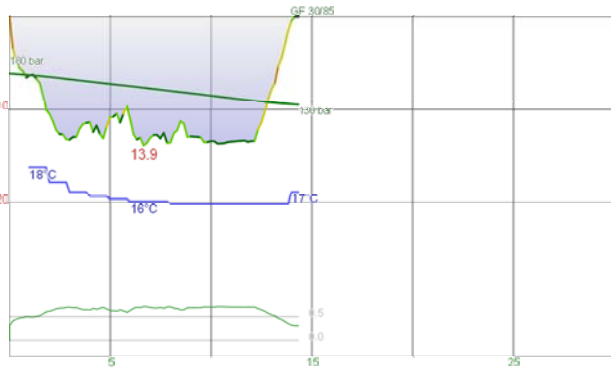


Dive #3361 - Sat, Sep 29, 2012 8:38
Australia North Linta Strait Sydney Bypass Reef

Max depth: 28 m
Duration: 34 min

Weight System		Gas Used	SAC	Weight System
Cylinder	Gasmix EAN30	1326.8 l	12.8 l/min	Total Weight: 0.0 kg
			Max. CNS 12	
			OTU 33	

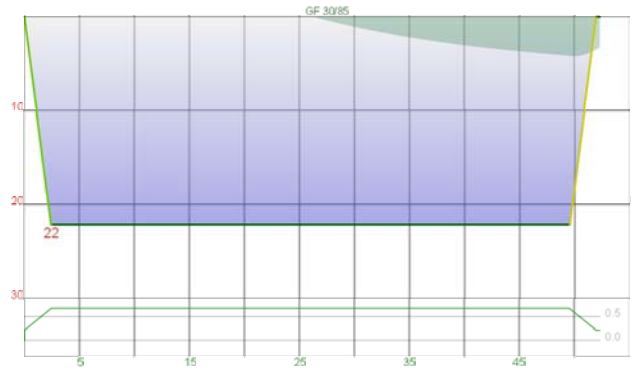
Comment: Computer Settings: ZH-L16 GF OC 30% / 90%
Wow, what a great dive site. First time to dive it, at the mouth of Botany Bay. Great wall from 20 m to 26-7 m. Overhangs and caves, swim-throughs. Huge number of red morwong and one-spot pullers. A couple of small blue devilfish as well as a cuttlefish. One we will do many more times. Visibility very good.



Dive #3362 - Sat, Sep 29, 2012 9:36
Australia North Linta Strait Sydney
Bare Island Right

Cylinder	Gasmix	Gas Used	SAC	Weight System
	EAN30	552.8 l	18.9 l/min	Total Weight: 0.0 kg
			Max. CNS	
			13	
			OTU	
			5	

Comment: Computer Settings: ZH-L16 GF OC 30% / 90%
A dive to recover the anchor I found on Thursday night. What a wopper. A 35lb plough anchor with about 25 metres of heavy chain. Used a rope to attach to the end and then sent up my safety sausage. Took two of us to haul it back on board. Visibility poor.



Dive #3363 - Sat, Sep 29, 2012 18:45
Australia NSW Sydney The Leap

Cylinder	Gasmix	Gas Used	SAC	Weight System
			0.0 l/min	Total Weight: 0.0 kg
			Max. CNS	
			0	
			OTU	
			0	

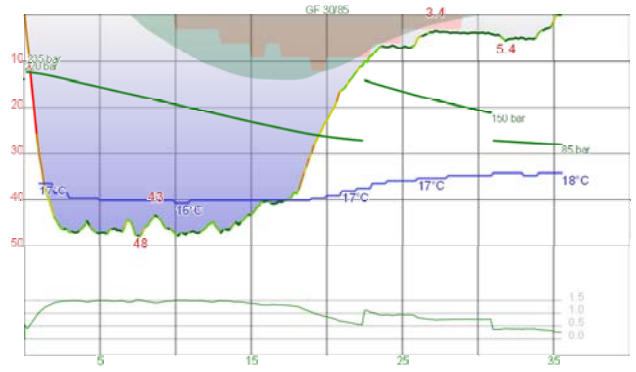
Diveactivity: Drift dive
DiveType: Drift dive
Comment: Club night dive. Forgot computer and also hood! Flat seas meant could do the drift. Went pretty fast for first 20 minutes. Saw one sea horse where we have seen before. A lot of large octopus, many small squid, all the normal fish. Nice easy dive with BBQ afterwards. Visibility good.



Dive #3364 - Sun, Sep 30, 2012 8:50
Australia NSW Sydney Bare Island
Isolated Reefs

Cylinder	Gasmix	Gas Used	SAC	Weight System
	air	1611.1 l	12.3 l/min	Total Weight: 0.0 kg
			Max. CNS	
			8	
			OTU	
			6	

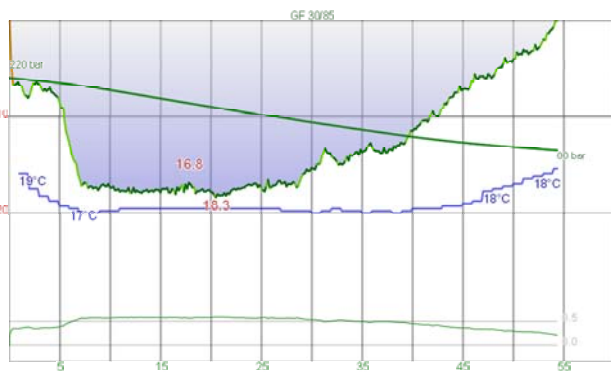
Comment: Computer Settings: ZH-L16 GF OC 30% / 90%
Went out through the pool. Lost my buddies within 3 mins when they did not turn left when we hit the sand! Waited for them but they never came along as they went over the sand! Went to IR1 (lots of sand between here and main reef) to IR2. Much deeper out here, sand missing. Saw a sea dragon and collected some chain on S side IR2. Back to exit and refound buddies! Visibility variable, fair.



Dive #3365 - Mon, Oct 1, 2012 8:48
Australia North Linta Strait Sydney
Coolooli

Cylinder	Gasmix	Gas Used	SAC	Weight System
	EAN55 EAN26	152.0 l 1658.4 l	13.1 l/min	Total Weight: 0.0 kg
			Max. CNS	
			19	
			OTU	
			43	

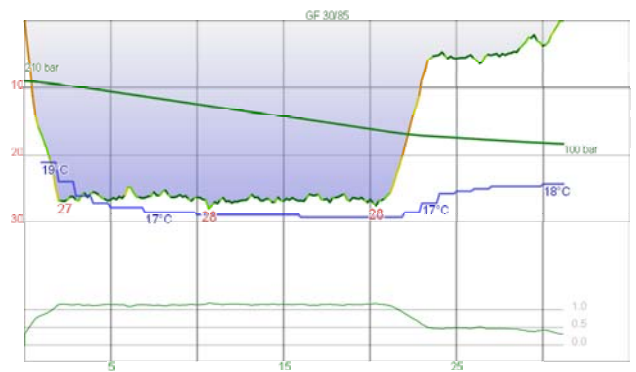
DiveType: Wreck dive
Comment: Computer Settings: ZH-L16 GF OC 30% / 90%
First dive here for a long time and since it collapsed. Anchored near the front of the main cutter. Went to stern and then back again via the internal cutter area. Back to bridge area and then up. Quite a few Port Jackson sharks. Visibility fair.



Dive #3366 - Thu, Oct 4, 2012 19:51
Australia NSW Sydney Bare Island
Deep Wall Drift

Cylinder	Gasmix	Gas Used	SAC	Weight System
	air	1409.7 l	11.0 l/min	Total Weight: 0.0 kg
			Max. CNS	
			7	
			OTU	
			6	

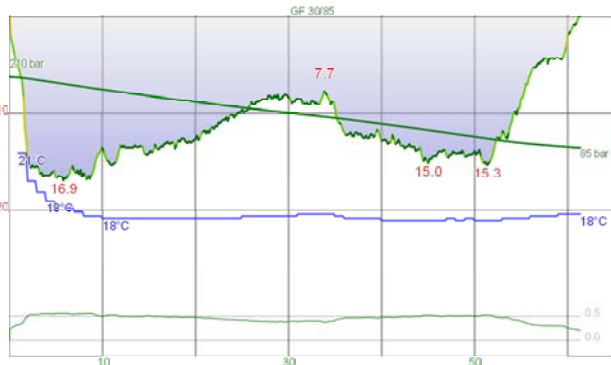
DiveType: Drift dive
Comment: Computer Settings: ZH-L16 GF OC 30% / 90%
Club night dive. Relocated here from Shark Point due to seas. Went in off SE corner and went S and W to Deep Wall. Good incoming tide drifted us along. Lots of PJs all over the place and a huge bullray on the deep wall. Found a nudibranch that none of us had seen before. A few octopus, some small flathead, a huge wobbegong in cave at SHC. Water was quite warm...



Dive #3367 - Sat, Oct 6, 2012 8:37
Australia North Linta Strait Sydney
Bypass Reef

Cylinder	Gasmix	Gas Used	SAC	Weight System
	EAN31	1216.2 l	12.9 l/min	Total Weight: 0.0 kg
			Max. CNS	
			11	
			OTU	
			30	

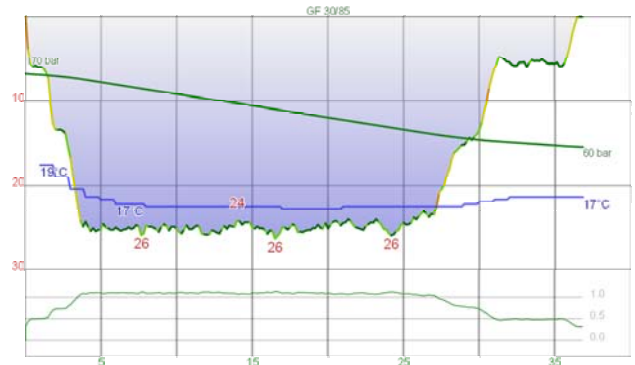
Comment: Computer Settings: ZH-L16 GF OC 30% / 90%
Decided to dive here again after last weekend's great dive. However, despite using the same GPS co-ordinates and being the same distance from them, we did not seem to be in the same spot. Nevertheless, we had a nice dive. Nothing special seen, but was good anyway. Very dark and misty on top, so was dark on the bottom. Visibility fair.



Dive #3368 - Sun, Oct 7, 2012 13:27
Australia NSW Sydney Shiprock

Cylinder	Gasmix	Gas Used	SAC	Weight System
	air	13598.2 l	100.9 l/min	Total Weight: 0.0 kg
			Max. CNS	8
			OTU	2

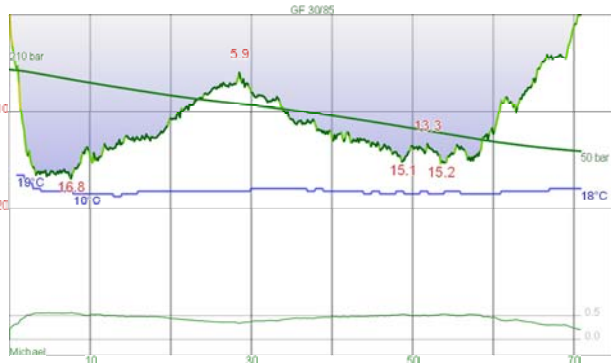
Dive type: Drift dive
Comment: Computer Settings: ZH-L16 GF OC 30% / 90%
Had to cancel club deep dive as almost 6 m seas. Not as many people here as I thought there would be. Again, we did not see anything special, a few nudis and all the normal fish. As on other occasions, dive shop people went in probably 30 mins early, why the hell do they do this? Visibility poor.



Dive #3369 - Wed, Oct 10, 2012 8:55
Australia NSW Sydney Pizza Reef

Cylinder	Gasmix	Gas Used	SAC	Weight System
	EAN31	1216.2 l	11.3 l/min	Total Weight: 0.0 kg
			Max. CNS	12
			OTU	35

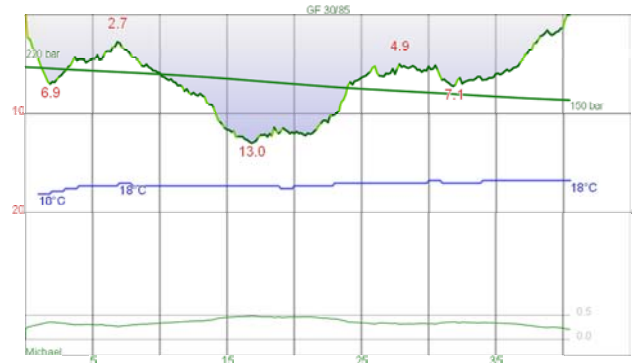
Comment: Computer Settings: ZH-L16 GF OC 30% / 90%
Club boat dive. Very dirty water and a long rolling swell that at times was large. Also lots of whales and dolphins around. A bit surgy on the bottom but viz was better. A slight current from N all the way to bottom. Bastard trumpetsand and luderick and some yellowtail. Other than that, nothing special. Visibility poor.



Dive #3370 - Thu, Oct 11, 2012 17:50
Australia NSW Sydney Shiprock

Cylinder	Gasmix	Gas Used	SAC	Weight System
	air	1611.1 l	10.5 l/min	Total Weight: 0.0 kg
	EAN26	0 bar	Max. CNS	2
	EAN55	0 bar	OTU	2
	EAN31	0 bar		

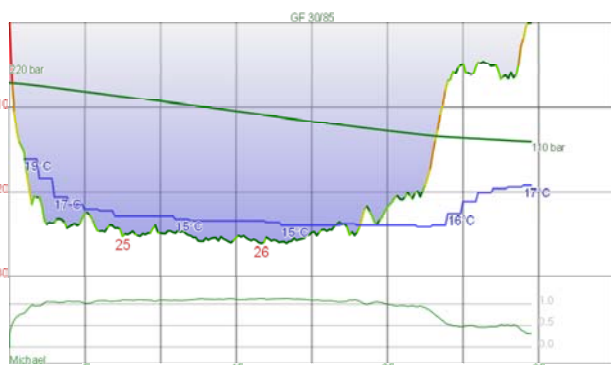
Comment: Computer Settings: ZH-L16 GF OC 30% / 90%
Club night dive but did as evening dive. Conditions similar to last Sunday. 6 pineapplefish, one moray eel, a couple of frogfish. Reasonable dive. Visibility poor.



Dive #3371 - Sat, Oct 13, 2012 9:33
Australia NSW Sydney Lilli Pilli

Cylinder	Gasmix	Gas Used	SAC	Weight System
	air	704.8 l	9.5 l/min	Total Weight: 0.0 kg
	EAN26	0 bar	Max. CNS	11
	EAN55	0 bar	OTU	0
	EAN31	0 bar		

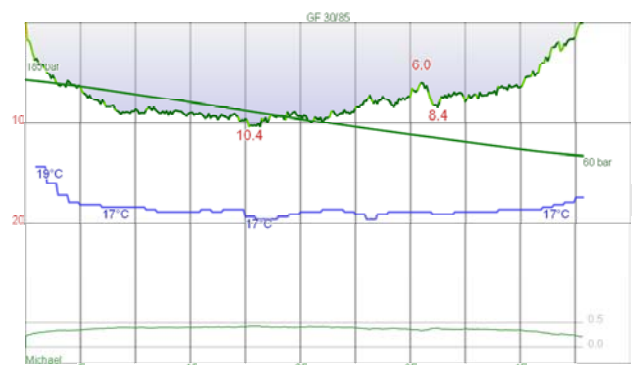
Comment: Computer Settings: ZH-L16 GF OC 30% / 90%
Once again we had to cancel the Club deep dive. I think this was 8 out of 10! No sea horses, not much seen except a small turtle in about 6 m and a spotted moray eel. Visibility poor deeper but fair shallow.



Dive #3372 - Wed, Oct 17, 2012 9:00
Australia NSW Sydney Barrens Hut/
The Split

Cylinder	Gasmix	Gas Used	SAC	Weight System
	EAN31	1216.2 l	11.1 l/min	unknown 8.0 kg
	EAN26	0 bar	Max. CNS	11
	EAN55	0 bar	OTU	34
	EAN31	0 bar		

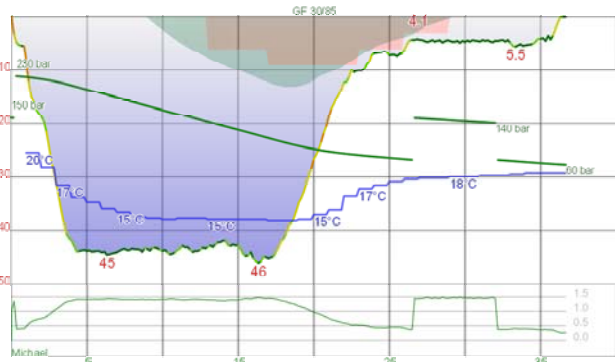
Comment: Computer Settings: ZH-L16 GF OC 30% / 90%



Dive #3373 - Sat, Oct 20, 2012 8:23
Australia NSW Sydney Oak Park

Cylinder	Gasmix	Gas Used	SAC	Weight System
	air	974.8 l	11.1 l/min	Total Weight: 0.0 kg
	EAN26	0 bar	Max. CNS	16
	EAN55	0 bar	OTU	0
	EAN31	0 bar		

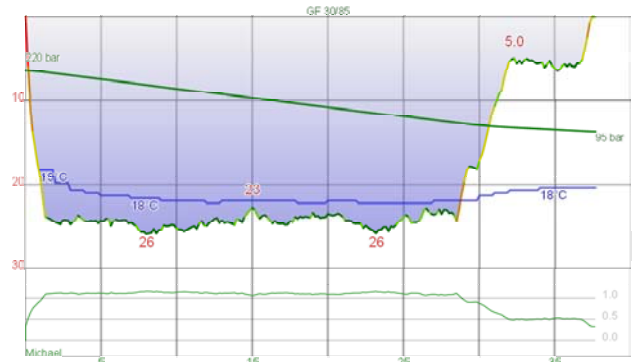
Comment: Computer Settings: ZH-L16 GF OC 30% / 90%
Club shore dive and BBQ. Went in from back of the pool and followed wall. Headed along sand edge to the sword and over to the second reef. Then back along main wall. Saw a moray eel, lots of smooth boxfish and some very friendly gropers. Not much else. Visibility poor.



Dive #3374 - Sun, Oct 21, 2012 8:30
Australia NSW Sydney SS Tuggerah Max depth: 46 m
Duration: 37 min

Cylinder	Gasmix	Gas Used	SAC	Weight System
EAN26	Oxygen	98.7 l	16.4 l/min	Total Weight: 0.0 kg
EAN55	air	2047.4 l	Max. CNS 16	
EAN31	air	0 bar	OTU 44	
EAN32	air	0 bar		

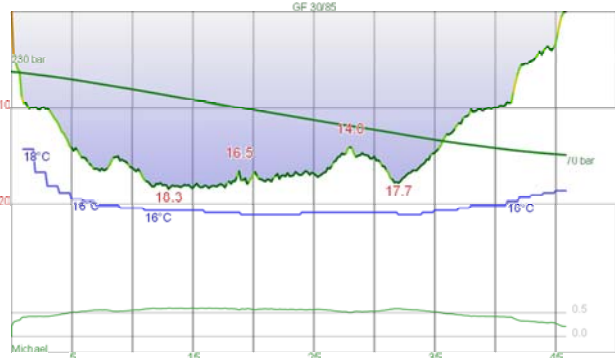
Comment: Computer Settings: ZH-L16 GF OC 30% / 90%
Finally got to dive the Tuggerah after many failed attempts. Large rolling swell but smooth. Very slight current from N. Dirty and warm on top but very cold (14.4) on bottom. Lots of nanygais, yellowtail. Did normal circuit of the wreck. Excellent dive. Visibility very good.



Dive #3375 - Wed, Oct 24, 2012 8:19
Australia NSW Sydney Hungry Jacks Max depth: 26 m
Duration: 38 min

Cylinder	Gasmix	Gas Used	SAC	Weight System
EAN32	air	1382.0 l	11.6 l/min	Total Weight: 8.0 kg
EAN26	air	0 bar	Max. CNS 13	
EAN55	air	0 bar	OTU 40	
EAN32	air	0 bar		

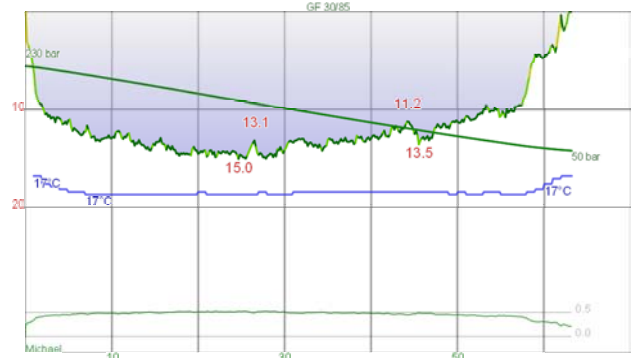
Comment: Computer Settings: ZH-L16 GF OC 30% / 90%
Club boat dive. Moderate swell running from both SE and NE. Cleaner on top, very dirty on bottom but at least it was relatively warm (17.4C). Huge numbers of seapike and yellowtail, some silver sweep and one-spot pullers. A couple of six-spined leatherjackets and one sea dragon. Only an average dive. Visibility very poor.



Dive #3376 - Thu, Oct 25, 2012 19:31
Australia NSW Sydney Bare Island Max depth: 18.4 m
Duration: 46 min

Cylinder	Gasmix	Gas Used	SAC	Weight System
EAN26	air	1358.3 l	11.7 l/min	Total Weight: 0.0 kg
EAN55	air	0 bar	Max. CNS 4	
EAN32	air	0 bar	OTU 6	
EAN32	air	0 bar		

Divetype: Night dive
Comment: Computer Settings: ZH-L16 GF OC 30% / 90%
Club night dive, 9 members. Went from Larpa Point trying to find the rock piles put over the electricity cables. Some found, there is no rock there, AusGrid lied! Ended up at E end of IR1 and then went right around. At the W end of IR2 there has been a huge amount of rock movement, some as big as a truck. Hard to see in the dark where they have come from. Lots of...



Dive #3377 - Sat, Oct 27, 2012 8:33
Australia NSW Sydney Inscription Point Max depth: 15.1 m
Duration: 63 min

Cylinder	Gasmix	Gas Used	SAC	Weight System
EAN26	air	1528.1 l	10.6 l/min	Total Weight: 0.0 kg
EAN55	air	0 bar	Max. CNS 13	
EAN32	air	0 bar	OTU 1	
EAN32	air	0 bar		

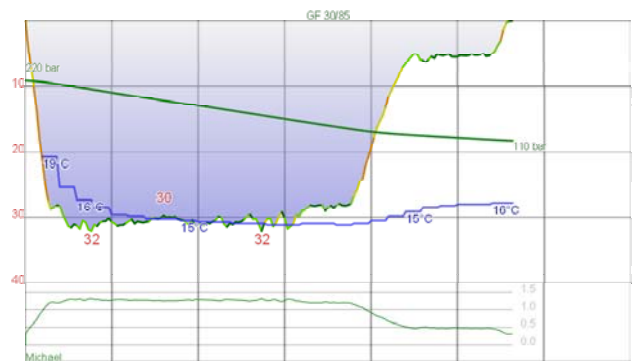
Comment: Computer Settings: ZH-L16 GF OC 30% / 90%
Cancelled deep dive once again due to 20kt+ winds. Drifted out in current and then back. Found one sea horse and Kelly found a pygmy pipehorse. Lots of large purple dragons and many other species. Big school of tevally, one-spot pullers and ladder-finned pomfrets near entrance. After surfacing, saw a group of divers from Abyss lost hundreds of metres off the shore. How the hell did they get there? Yes Dear Too rescued them by towing back to Monuments. Visibility fair.



Dive #3378 - Sun, Oct 28, 2012 7:59
Australia NSW Sydney TSS Currajong Max depth: 26 m
Duration: 50 min

Cylinder	Gasmix	Gas Used	SAC	Weight System
EAN32	air	1824.3 l	13.4 l/min	Total Weight: 8.0 kg
EAN26	air	0 bar	Max. CNS 13	
EAN55	air	0 bar	OTU 41	
EAN32	air	0 bar		

Comment: Computer Settings: ZH-L16 GF OC 30% / 90%
Went from shore using scooters. Had trouble finding the stakes/markers that Mark put there about 5 years ago. Ended up to E of wreck and came back and hit it 1/3 towards bow on starboard side. Left scooters here and went to bow. Then down port side to stern. Not much seems to have changed since I last dived it, perhaps less mussel shells. Back to scooters along top of deck, then to bow on deck. Followed the stakes back to shore. Did safety stop at 10 m and then rushed to shore. Saw an an...



Dive #3379 - Wed, Oct 31, 2012 8:57
Australia NSW Sydney Middle Ground Max depth: 32 m
Duration: 28 min

Cylinder	Gasmix	Gas Used	SAC	Weight System
EAN31	air	1216.2 l	12.7 l/min	Total Weight: 8.0 kg
EAN26	air	0 bar	Max. CNS 10	
EAN31	air	0 bar	OTU 31	
EAN32	air	0 bar		

Comment: Computer Settings: ZH-L16 GF OC 30% / 90%
Club boat dive. Yesterday members dived Wattamolla and had 3-5m and raging current. Today, we had 15 m viz and no current! However, very cold at 14.3C. Lots of seapike and yellowtail. A moray eel guarding the sinkers at the octopus home. Very good dive. Visibility very good.