

Dive #3289 - Sat, Jun 30, 2012 9:21
Australia NSW Sydney Osborne Shoals

Max depth: 21 m
Duration: 48 min

Cylinder	Gasmix	Gas Used	SAC	Weight System
	EAN30	1216.2 l	9.2 l/min	unknown
			Max. CNS	8.0 kg
			OTU	34
			Total Weight:	8.0 kg

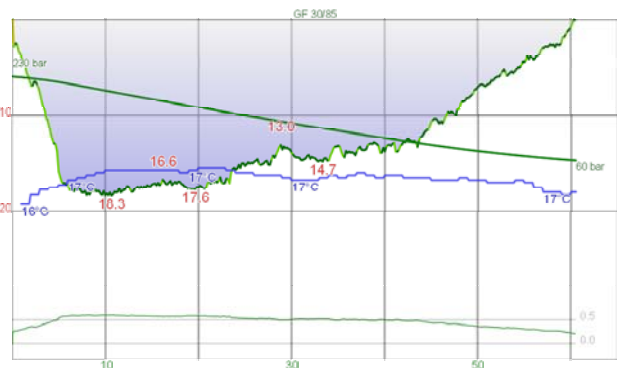
Dive type: Club dive

Comment: Computer Settings: ZH-L16 OC 110% / 90%

Club boat dive - 4 boats. First dive with new HW OSTC 2N computer, went well.

Was to be Xanadu but first ones down returned straight away as filthy.

Went to Osborne. Not that much better, 3 m viz and very surge. Did 45



Dive #3290 - Sun, Jul 1, 2012 9:46
Australia NSW Sydney Bare Island

Max depth: 18.3 m
Duration: 61 min

Deep Wall

Cylinder	Gasmix	Gas Used	SAC	Weight System
	air	1443.2 l	10.1 l/min	unknown
			Max. CNS	8.0 kg
			OTU	6
			Total Weight:	8.0 kg

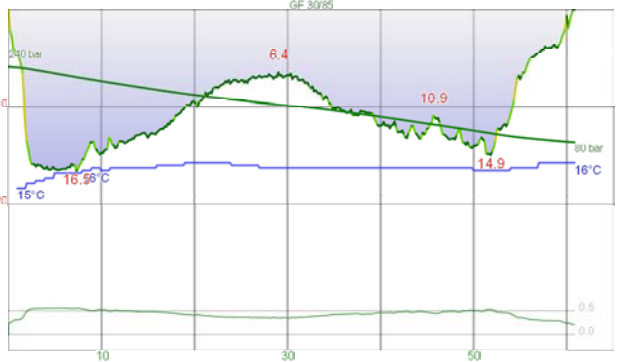
Dive activity: Drift dive

Dive type: Club dive

Comment: Computer Settings: ZH-L16 OC 110% / 90%

Club shore dive. Was supposed to be Shark Point but very large NE swell so

moved to here. We were going to do Bare Island East but spoke to a diver who



Dive #3291 - Tue, Jul 3, 2012 7:53
Australia NSW Sydney Shiprock

Max depth: 16.5 m
Duration: 61 min

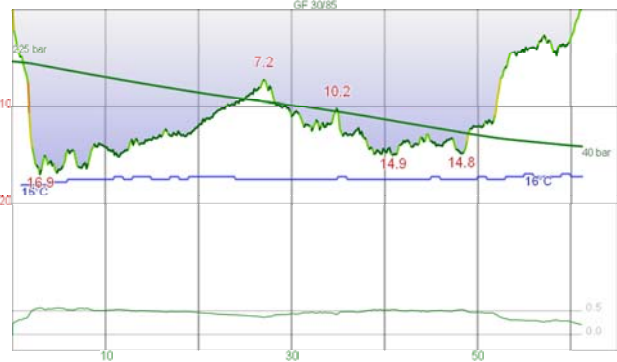
Cylinder	Gasmix	Gas Used	SAC	Weight System
	air	1247.8 l	9.3 l/min	unknown
			Max. CNS	8.0 kg
			OTU	1
			Total Weight:	8.0 kg

Dive activity: Drift dive

Dive type: Drift dive

Comment: Computer Settings: ZH-L16 OC 110% / 90%

Quite cold in and out of the water. Water was pretty clean considering the dredge working opposite (was not there this morning). A few octopus, lots



Dive #3292 - Wed, Jul 4, 2012 8:57
Australia NSW Sydney Shiprock

Max depth: 16.9 m
Duration: 61 min

Cylinder	Gasmix	Gas Used	SAC	Weight System
	air	1442.7 l	10.7 l/min	unknown
			Max. CNS	8.0 kg
			OTU	2
			Total Weight:	8.0 kg

Dive activity: Drift dive

Dive type: Drift dive

Comment: Computer Settings: ZH-L16 OC 110% / 90%

Just as cold as yesterday, should have got my drysuit ready for this dive.

Similar dive to yesterday, saw more Opera house nudis and the pineapplefish.



Dive #3293 - Sat, Jul 7, 2012 10:42
Australia NSW Sydney Shiprock

Max depth: 16.7 m
Duration: 66 min

Cylinder	Gasmix	Gas Used	SAC	Weight System
	air	1676.7 l	12.1 l/min	unknown
			Max. CNS	9
			OTU	2
			Total Weight:	0.0 kg

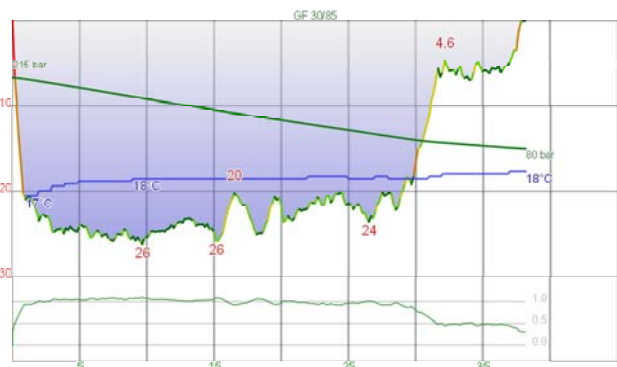
Dive activity: Drift dive

Dive type: Drift dive

Comment: Computer Settings: ZH-L16 OC 110% / 90%

We were supposed to dive SS Tuggerah but winds 20+ kts. Much warmer and

better viz than the two dives during the week. Saw a dwarf firefish, a



Dive #3294 - Sun, Jul 8, 2012 8:53
Australia NSW Sydney Barrens Hut/ The Split

Max depth: 26 m
Duration: 38 min

Cylinder	Gasmix	Gas Used	SAC	Weight System
	EAN30	1492.6 l	13.0 l/min	unknown
			Max. CNS	12
			OTU	34
			Total Weight:	0.0 kg

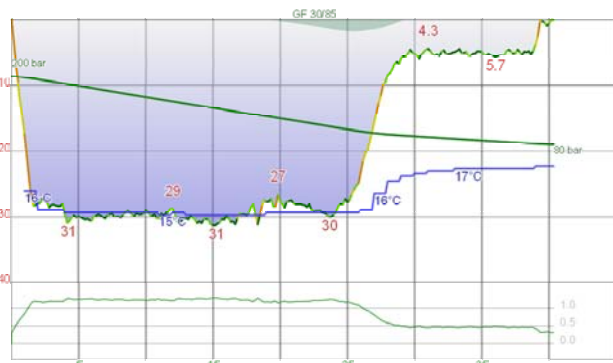
Comment: Computer Settings: ZH-L16 OC 110% / 90%

Much nicer day than yesterday. Had some new members with us and Daryl

took Yas Dear out for its first trip so we went to a favourite dive.

What a dive! Could see the bottom as soon as we entered the water.

Went along The Split to N. Headed back along outside reef. Could easily

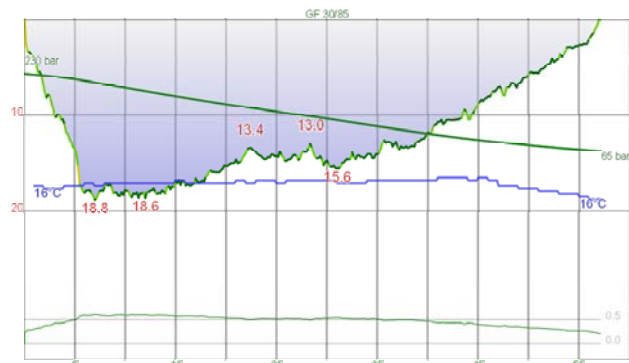


Dive #3295 - Wed, Jul 11, 2012 8:32
Australia NSW Sydney Middle Ground

Max depth: 31 m
Duration: 40 min

Cylinder	Gasmix	Gas Used	SAC	Weight System
EAN31	air	1326.8 l	10.9 l/min	Total Weight: 0.0 kg
			Max. CNS	
			15	
			OTU	
			40	

Comment: Computer Settings: ZH-L16 OC 110% / 90%
Club boat dive. Very large swells, but smooth. Quite comfortable on the boat. Simon's valve leaked and we could not repair. Turned out to be the DIN insert o-ring but we did not find out till after, so he did not dive. Huge amount of fish, mostly seapike and silver sweep. One blue devilfish, other saw a

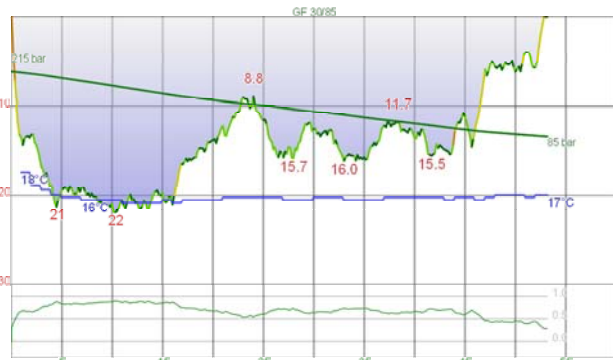


Dive #3296 - Thu, Jul 12, 2012 19:19
Australia NSW Sydney Bare Island

Max depth: 18.8 m
Duration: 57 min

Cylinder	Gasmix	Gas Used	SAC	Weight System
air	air	1400.8 l	10.5 l/min	Total Weight: 0.0 kg
			Max. CNS	
			8	
			OTU	
			5	

Divetype: Night dive
Comment: Computer Settings: ZH-L16 OC 110% / 90%
Club night dive. Went in off W point. Lots of jellyfish and then a firefish. As soon as we dropped over the wall I found a red indianfish. Then more firefish. Ken had a seal buzz him here. Further on, more firefish. The seal then buzzed Ken and me. Another RIF was seen, more firefish (6 in total), PJs, large flathead, squid and finally, two pygmy pipehorses. A brilliant dive...

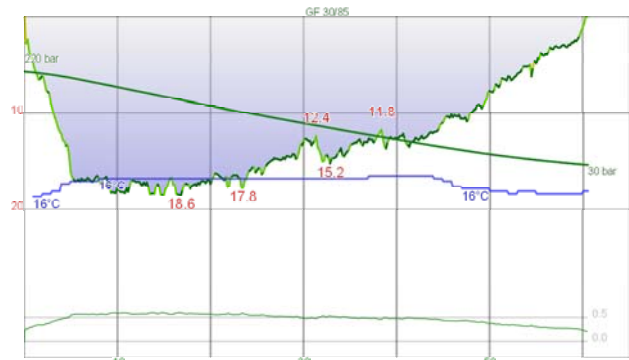


Dive #3297 - Sat, Jul 14, 2012 9:11
Australia NSW Sydney Marley Point

Max depth: 22 m
Duration: 53 min

Cylinder	Gasmix	Gas Used	SAC	Weight System
EAN28	air	1437.3 l	10.9 l/min	Total Weight: 0.0 kg
			Max. CNS	
			11	
			OTU	
			28	

Divetype: Club dive
Comment: Computer Settings: ZH-L16 OC 110% / 90%
Club boat dive, 4 boats, 20 people. What a dive. Blue water, seal on the surface, whales on the way down and back, plus a brilliant dive. Most yellowtail I have ever seen on a dive. A lot of ladder-finned pomfrets and some seapike. The 4th great dive in a row. Visibility very good.

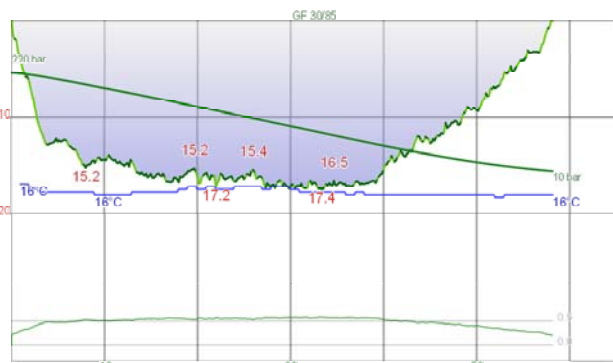


Dive #3298 - Sun, Jul 15, 2012 9:35
Australia NSW Sydney Bare Island

Max depth: 18.6 m
Duration: 57 min

Cylinder	Gasmix	Gas Used	SAC	Weight System
air	air	1613.0 l	11.5 l/min	Total Weight: 0.0 kg
			Max. CNS	
			8	
			OTU	
			6	

Comment: Computer Settings: ZH-L16 OC 110% / 90%
Went in off W point and went to Deep Wall. Refound the RIF from Thursday night and Kelly found 5 PPH in the first few minutes. Also some Verco tambjas. Travelled quite slow for the deeper section. Natasha found 2 more RIF on 15 m Reef and Gary saw some firefish. A few PJs all over the place. Dirtier and colder above about 10 m. Could not find the PPH at 10 m. Visibility very good.



Dive #3299 - Sun, Jul 15, 2012 11:57
Australia NSW Sydney Bare Island

Max depth: 17.4 m
Duration: 58 min

Cylinder	Gasmix	Gas Used	SAC	Weight System
air	air	1782.8 l	12.9 l/min	Total Weight: 0.0 kg
			Max. CNS	
			12	
			OTU	
			6	

Comment: Computer Settings: ZH-L16 OC 110% / 90%
Did a second dive the first was so good. Went off W point and headed W to sand. Then along 15 m Reef to end and across to main reef and then outside IR1. Along here Kelly found a PPH. At the end of IR2 there was a blue devilfish. Further along Mikhail found a RIF and back on main reef Kelly found about 20 sulphur Noumea nudibranchs on a yellow sponge. Incoming tide but not as good viz as first dive. Visibility good.



Dive #3300 - Wed, Jul 18, 2012 9:04
Australia NSW Sydney Underwater

Max depth: 21 m
Duration: 56 min

Cylinder	Gasmix	Gas Used	SAC	Weight System
EAN31	air	1713.7 l	12.2 l/min	Total Weight: 0.0 kg
			Max. CNS	
			13	
			OTU	
			36	

Comment: Computer Settings: ZH-L16 OC 110% / 90%
Club boat dive. Tried to dive The Balcony but swell a bit too big. First time we have dived here since 2009. Viz and water temperature down a little from Saturday but still nice. Lots of yellowtail and one-spot pullers in the gullies. Went thru all the swim-throughs, including The Marble. Another very good dive. Visibility good.

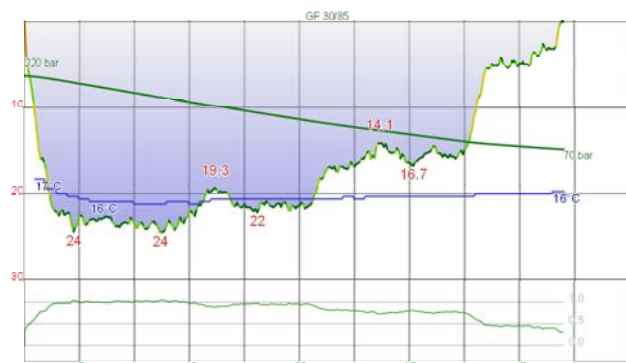


Dive #3301 - Sat, Jul 21, 2012 10:13
Australia NSW Jervis Bay North

Bowen Island Drift

Cylinder	Gasmix	Gas Used	SAC	Weight System
	EAN31	1658.4 l	11.2 l/min	Total Weight: 0.0 kg
			Max. CNS	
			13	
			OTU	
			36	

Comment: Computer Settings: ZH-L16 OC 110% / 90%
Club trip. Very large seas but not too bad here. Went to North Bowen Island. Did a drift in. A bit surgy. Huge numbers of PJs, lots of one-spot pullers. A few sea dragons, a yellow knuckle sea spider. Reasonable dive considering conditions. Visibility good.

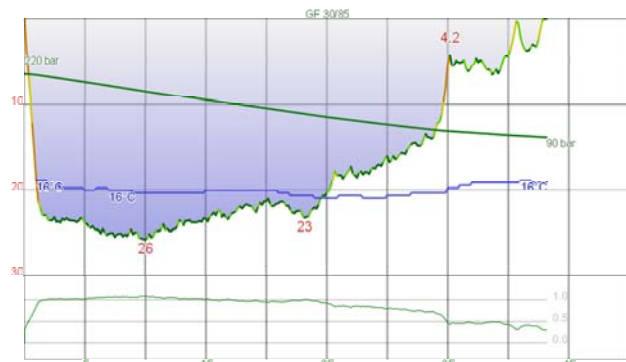


Dive #3302 - Sat, Jul 21, 2012 12:38
Australia NSW Jervis Bay North

Bowen Island

Cylinder	Gasmix	Gas Used	SAC	Weight System
	EAN30	1658.4 l	12.1 l/min	Total Weight: 0.0 kg
			Max. CNS	
			20	
			OTU	
			37	

Comment: Computer Settings: ZH-L16 OC 110% / 90%
Went to a similar spot where we started least dive. Went to W and then back shallower. Saw more PJs, then a huge bullray. Also more one-spot pullers. Nice dive. Visibility good.

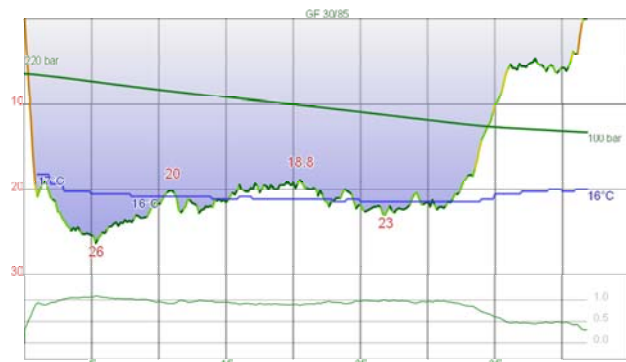


Dive #3303 - Sun, Jul 22, 2012 9:58
Australia NSW Jervis Bay North

Bowen Island Drift

Cylinder	Gasmix	Gas Used	SAC	Weight System
	EAN30	1437.3 l	11.5 l/min	Total Weight: 0.0 kg
			Max. CNS	
			13	
			OTU	
			35	

Comment: Computer Settings: ZH-L16 OC 110% / 90%
Did a drift dive from similar place to yesterday morning. Kelly and I went more N than W and ended up having to swim back S for a long time to get back into the shallows. Saw a few sea dragons, lots of PJs. Not a lot more. Very surgy, even at 25 m. Nice reef out here. Visibility fair, but good shallower.

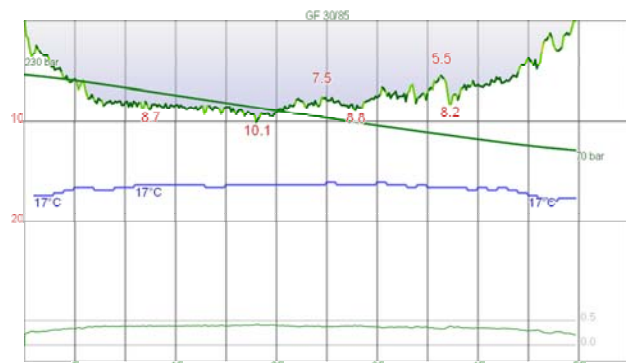


Dive #3304 - Sun, Jul 22, 2012 11:59
Australia NSW Jervis Bay North

Island

Cylinder	Gasmix	Gas Used	SAC	Weight System
	EAN30	1326.8 l	10.6 l/min	Total Weight: 0.0 kg
			Max. CNS	
			20	
			OTU	
			35	

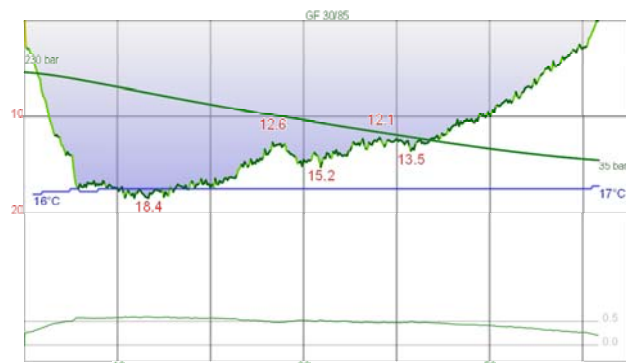
Comment: Computer Settings: ZH-L16 OC 110% / 90%
Anchored a little further out than second dive yesterday. Went to sand and then W. Saw 4 sea dragons, Kelly found more sea spiders, heaps more PJs, some saw a huge bullray, probably the one we saw yesterday. Very surgy again. Visibility good.



Dive #3305 - Thu, Jul 26, 2012 19:24
Australia NSW Sydney Oak Park

Cylinder	Gasmix	Gas Used	SAC	Weight System
	air	1247.8 l	12.7 l/min	Total Weight: 0.0 kg
			Max. CNS	
			7	
			OTU	
			0	

Comment: Computer Settings: ZH-L16 OC 110% / 90%
Club night dive. Water was a warm 17.2°C. Went from behind pool and then SW to sand. Saw a PJ with an egg in its mouth. Not all that much along the sand edge. Viz was variable. Out near urinal was a shovel-nosed ray. Back along the wall there were three very large cuttlefish, a large squid and a few small octopus. Not the greatest dive, but okay. Visibility fair.

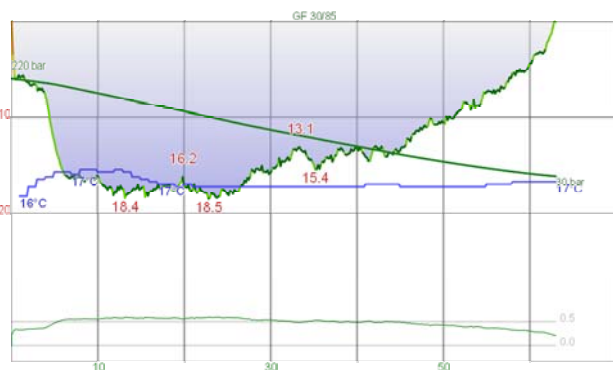


Dive #3306 - Fri, Jul 27, 2012 8:40
Australia NSW Sydney Bare Island

Deep Wall

Cylinder	Gasmix	Gas Used	SAC	Weight System
	air	1655.5 l	11.5 l/min	Total Weight: 0.0 kg
			Max. CNS	
			8	
			OTU	
			5	

Comment: Computer Settings: ZH-L16 OC 110% / 90%
Weekly Friday dive. Went of W point and SW. Could not find the RIF that has been here nor any PPH. Viz was really good here and current already incoming even though only 30 minutes after low tide. Went to RIF Reef but none there. Then to 15 Metre Reef, one RIF there and a dwarf firefish. Lots of purple dragons, some sulphur noumeas, one Verco tamaja. Lots of other fish. Very nice dive. Visibility good.

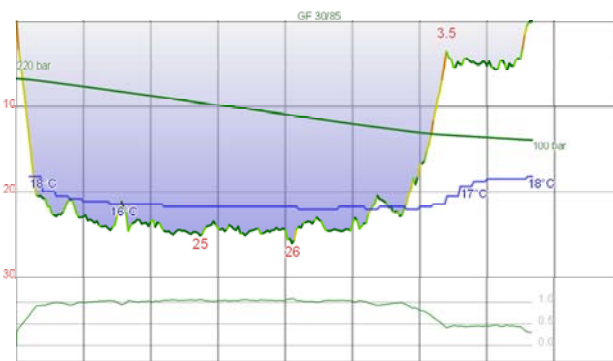


Dive #3307 - Fri, Jul 27, 2012 10:40
Australia NSW Sydney Bare Island

Deep Wall Drift

Cylinder	Gasmix	air	Gas Used	1613.0 l	SAC	10.9 l/min	Weight System	
					Max. CNS	14	Total Weight:	0.0 kg
					OTU	6		

Comment: Computer Settings: ZH-L16 OC 110% / 90%
Decided to do a second dive, the first was so good. This time went from SE corner of island around to S and W to the Deep Wall. Water quite warm out there, 17°C. Drifted in, hardly had to swim at all. Gary found the RIF at the normal spot, was under a rock. Back via SH Corner, similar to last dive. Another very good dive. Visibility good (very good shallow).

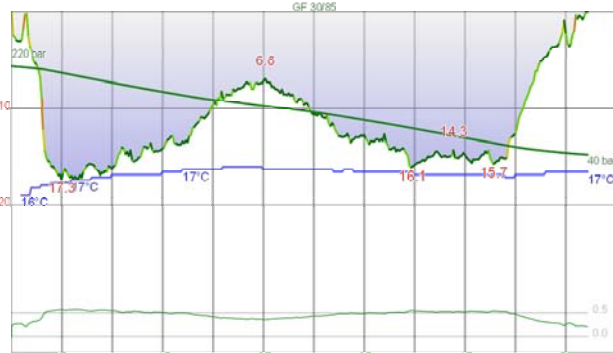


Dive #3308 - Sat, Jul 28, 2012 9:03
Australia NSW Sydney The Split

Max depth: 26 m
Duration: 38 min

Cylinder	Gasmix	EAN30	Gas Used	1326.8 l	SAC	11.3 l/min	Weight System	
					Max. CNS	12	Total Weight:	0.0 kg
					OTU	34		

Comment: Computer Settings: ZH-L16 OC 110% / 90%
Club boat dive. Strong W wind and seas up from yesterday. Still warm at 16.4 on bottom and 17.2 near surface. Took 3 goes to anchor, ended up SW of S end of Split. Went to Split and N. Took our time. Lots of PJs. Back E of anchor found a donut nembrotha where Nancy found a couple 3 weeks ago. Got some photos. A great find of a species not really known to be in Sydney. Wind changed to SW when I went to move anchor. Back up, Ray could not get any kick out of his motor and I start...

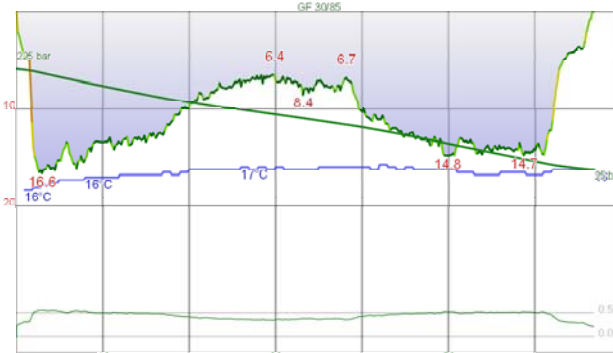


Dive #3309 - Wed, Aug 1, 2012 19:37
Australia NSW Sydney Shiprock

Max depth: 17.3 m
Duration: 57 min

Cylinder	Gasmix	air	Gas Used	1403.8 l	SAC	11.1 l/min	Weight System	
					Max. CNS	8	Total Weight:	0.0 kg
					OTU	3		

Divetype: Drift dive
Comment: Computer Settings: ZH-L16 OC 110% / 90%
Club night dive with 8 members. Dived a day early as seas huge and tide only suitable tonight. Very high tide and moved quite quickly. Water still around 17°C for most of the dive. At 25 minutes the tide changed very quickly and we headed back. Things seen include many firefish, small cuttlefish, lots of decorator crabs, one sea spider with white joints, three pineapplefish...

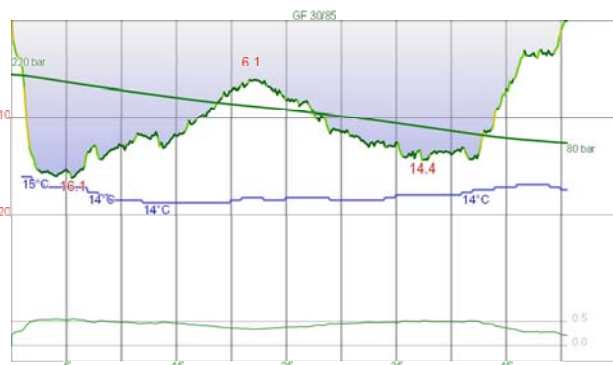


Dive #3310 - Fri, Aug 3, 2012 8:56
Australia NSW Sydney Shiprock

Max depth: 16.6 m
Duration: 67 min

Cylinder	Gasmix	air	Gas Used	1559.7 l	SAC	10.8 l/min	Weight System	
					Max. CNS	9	Total Weight:	0.0 kg
					OTU	1		

Comment: Computer Settings: ZH-L16 OC 110% / 90%
Before work dive. Did a similar dive to Wednesday night, but water only 16°C. However, much better viz, 10 m at least. A lower high tide so did not move as quick. Saw 4 pineapplefish, now 2 25 m S of Bubble Cave. Also refound the black anglerfish I found 7 July. It was 5 m NW of the plaque on sand next to some rock like growth. A few morays and small cuttlefish, lots of normal leatherjackets etc. A much better dive than the last one. Visibility fair.

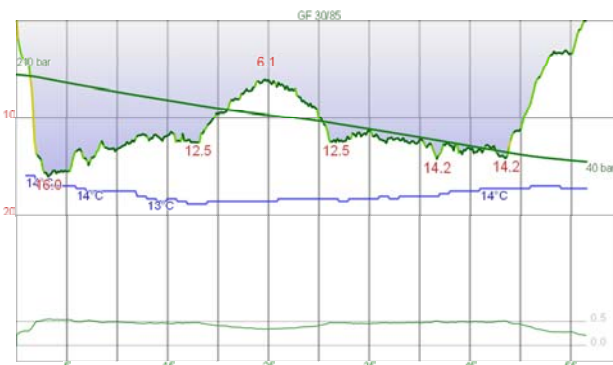


Dive #3311 - Thu, Aug 9, 2012 19:41
Australia NSW Sydney Shiprock

Max depth: 16.1 m
Duration: 51 min

Cylinder	Gasmix	air	Gas Used	1091.8 l	SAC	10.1 l/min	Weight System	
					Max. CNS	7	Total Weight:	0.0 kg
					OTU	1		

Divetype: Drift dive
Divetype: Night dive
Comment: Computer Settings: ZH-L16 GF OC 30% / 90%
Club night dive. Very, very cold water, 13.9°C for part of it, mostly 14.0-14.2°C. I was okay but Ken must have been freezing in wetsuit, no hood or gloves. Did normal dive, refound black anglerfish, further S than last week. Also a few morays, spott...

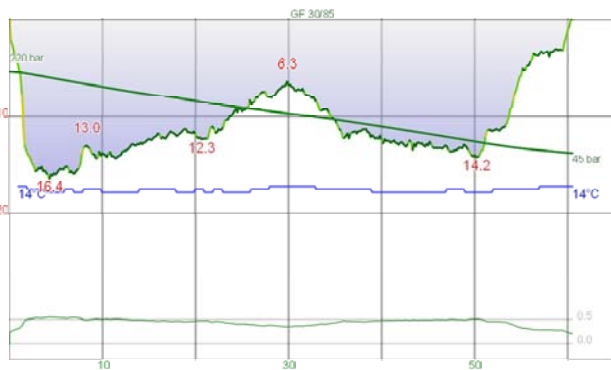


Dive #3312 - Sat, Aug 11, 2012 8:29
Australia NSW Sydney Shiprock

Max depth: 16.0 m
Duration: 57 min

Cylinder	Gasmix	air	Gas Used	1443.2 l	SAC	12.2 l/min	Weight System	
					Max. CNS	8	Total Weight:	0.0 kg
					OTU	1		

Divetype: Drift dive
Comment: Computer Settings: ZH-L16 GF OC 30% / 90%
Had to cancel all boat dives this weekend due to 100-kph winds and huge seas. Water even colder than last dive, 13.1°C, but mostly 13.3°C. Did similar dive to Thursday night, refound the anglerfish about 10 m to SW of previous spot. Saw 3 + 1 pineapplefish, moray eel, lots of yellowtail. Visibility fair.



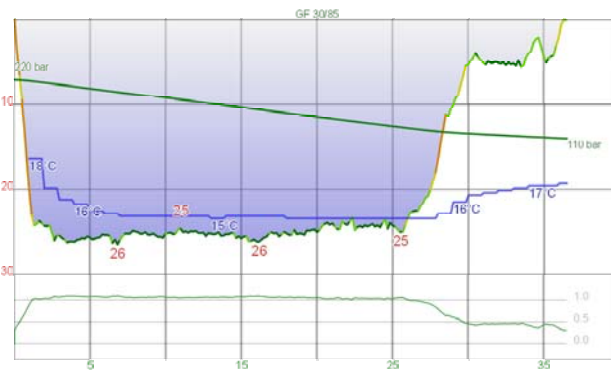
Dive #3313 - Sun, Aug 12, 2012 9:16
Australia NSW Sydney Shiprock

Cylinder	Gasmix air	Gas Used 1485.7 l	SAC 11.4 l/min	Weight System
			Max. CNS 8	Total Weight: 0.0 kg
			OTU 1	

Dive activity: Drift dive

Comment: Computer Settings: ZH-L16 GF OC 30% / 90%

Similar dive to yesterday, but almost a degree warmer (13.7°C). Refound anglerfish and took timelapse photography of it. Also refound 3 pineapplefish S of Bubble Cave and 2 at N end. Many small cuttlefish, a few large moray eels. Another reasonably good dive despite temperature. Visibility fair.

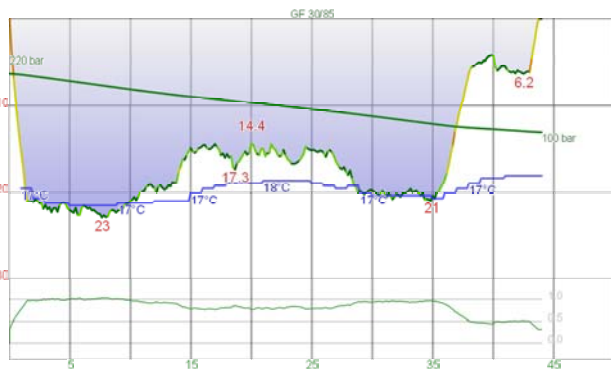


Dive #3314 - Wed, Aug 22, 2012 8:34
Australia NSW Sydney Pizza Reef

Cylinder	Gasmix EAN30	Gas Used 1216.2 l	SAC 10.6 l/min	Weight System
			Max. CNS 12	Total Weight: 0.0 kg
			OTU 34	

Comment: Computer Settings: ZH-L16 GF OC 30% / 90%

Club boat dive. First time we have been out in over 3 weeks, awful weather and then no-one interested. Flat seas and no wind! Lots of seapike, yellowtail and bastard trumpeters. Also some saw a blue devilfish and I found a juvenile sea dragon. A bit cold, (15.3), but a nice dive. Visibility good.

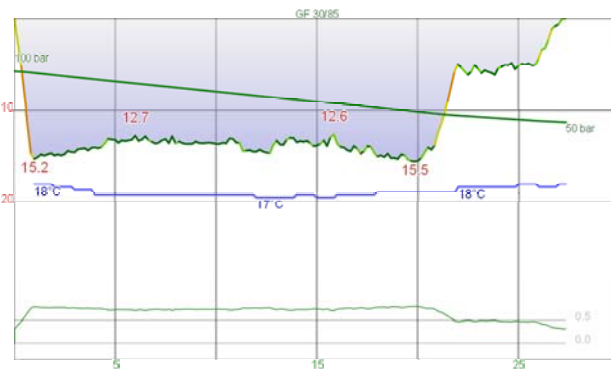


Dive #3315 - Sat, Aug 25, 2012 9:13
Australia NSW Sydney Yellow Rock

Cylinder	Gasmix EAN31	Gas Used 1326.8 l	SAC 10.9 l/min	Weight System
			Max. CNS 12	Total Weight: 0.0 kg
			OTU 34	

Comment: Computer Settings: ZH-L16 GF OC 30% / 90%

Club boat dive. Flat seas and no wind, but a little current from N. Went N at 22 m and then W till hit the main wall near rock platform. Huge amount of fishlife here, silver sweep, yellowtail, seapike, blackfish, luderick and more. Went S, lots of overhangs and caves and swim-throughs. Then back to anchor. Very good dive. Visibility very good.

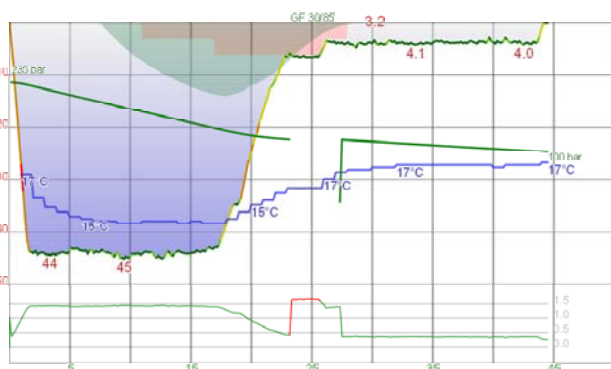


Dive #3316 - Sat, Aug 25, 2012 10:21
Australia NSW Sydney Magic Point

Cylinder	Gasmix EAN31	Gas Used 552.8 l	SAC 9.4 l/min	Weight System
			Max. CNS 15	Total Weight: 0.0 kg
			OTU 13	

Comment: Computer Settings: ZH-L16 GF OC 30% / 90%

Second dive using rest of air. Four boats there when we arrive, including two large ones. A lot of sand stirred up near cave. Sharks all over the place as one diver was inside the cave. Went to the overhang, 6 grey nurse sharks here. Then back to main cave. Another 6 here, happier that all the other divers have gone. Visibility good.

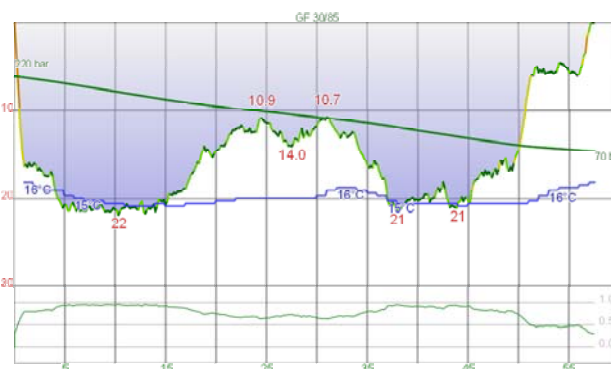


Dive #3317 - Sun, Aug 26, 2012 9:03
Australia NSW Sydney SS Tuggerah

Cylinder	Gasmix Oxygen	Gas Used 0.0 l	SAC 10.8 l/min	Weight System
			Max. CNS 25	Total Weight: 0.0 kg
			OTU 44	

Comment: Computer Settings: ZH-L16 OC 110% / 90%

Finally got to dive the Tuggerah after at least 8 aborted attempts this year. A bit sloppy on the way out but little wind and no current. Anchored in front of boiler. Went to stern and then to near bow and back to boiler. Lots of fish as usual. Did 17 mins on bottom. Used new OSTC 2N computer for the first time on a deep dive. Brilliant. When doing deco a charter boat circled us. Even after we surfaced and told them where the wreck was (100 m away by now), they could not find it. Had to take th...

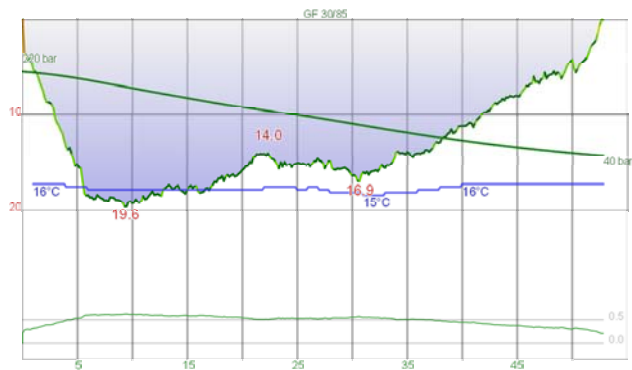


Dive #3318 - Wed, Aug 29, 2012 8:17
Australia NSW Sydney The Balcony

Cylinder	Gasmix EAN30	Gas Used 1658.4 l	SAC 10.9 l/min	Weight System
			Max. CNS 14	Total Weight: 0.0 kg
			OTU 38	

Comment: Computer Settings: ZH-L16 OC 110% / 90%

Club boat dive. Flat seas and little wind. Anchored at 16 m and went to sand at 22 m and then N. Found 2 pygmy pipehorses on a rock. Then N again and W to large overhang. Plenty of silver sweep, ladder-finned pomfrets and more here. Also saw a few largish moray eels on the way. Then back to anchor. Les went up. Then W to the other overhang. Back to anchor and then PPH again. Showed them to Phil and Phil. Very good dive. Visibility good.



Dive #3319 - Thu, Aug 30, 2012 19:30 Max depth: 19.6 m
 Australia NSW Sydney Bare Island Duration: 53 min

Deep Wall

Cylinder	Gasmix	Gas Used	SAC	12.1 l/min	Weight System
	air	1528.1 l	Max. CNS	7	Total Weight:
			OTU	6	0.0 kg

Dive type: Night dive

Comment: Computer Settings: ZH-L16 OC 110% / 90%

Club night dive. Very strong W winds and high tide so was a bit sloppy on W point. However, got in easy enough. Went SW to wall as normal. Headed back via IRF Reef. Viz quite good out here. Saw a dearf firefish on 15 Metre Reef and another tiny one closer to shore. Quite a few small morays, including the smallest one I have ever seen (10 mm head). A few large octop...